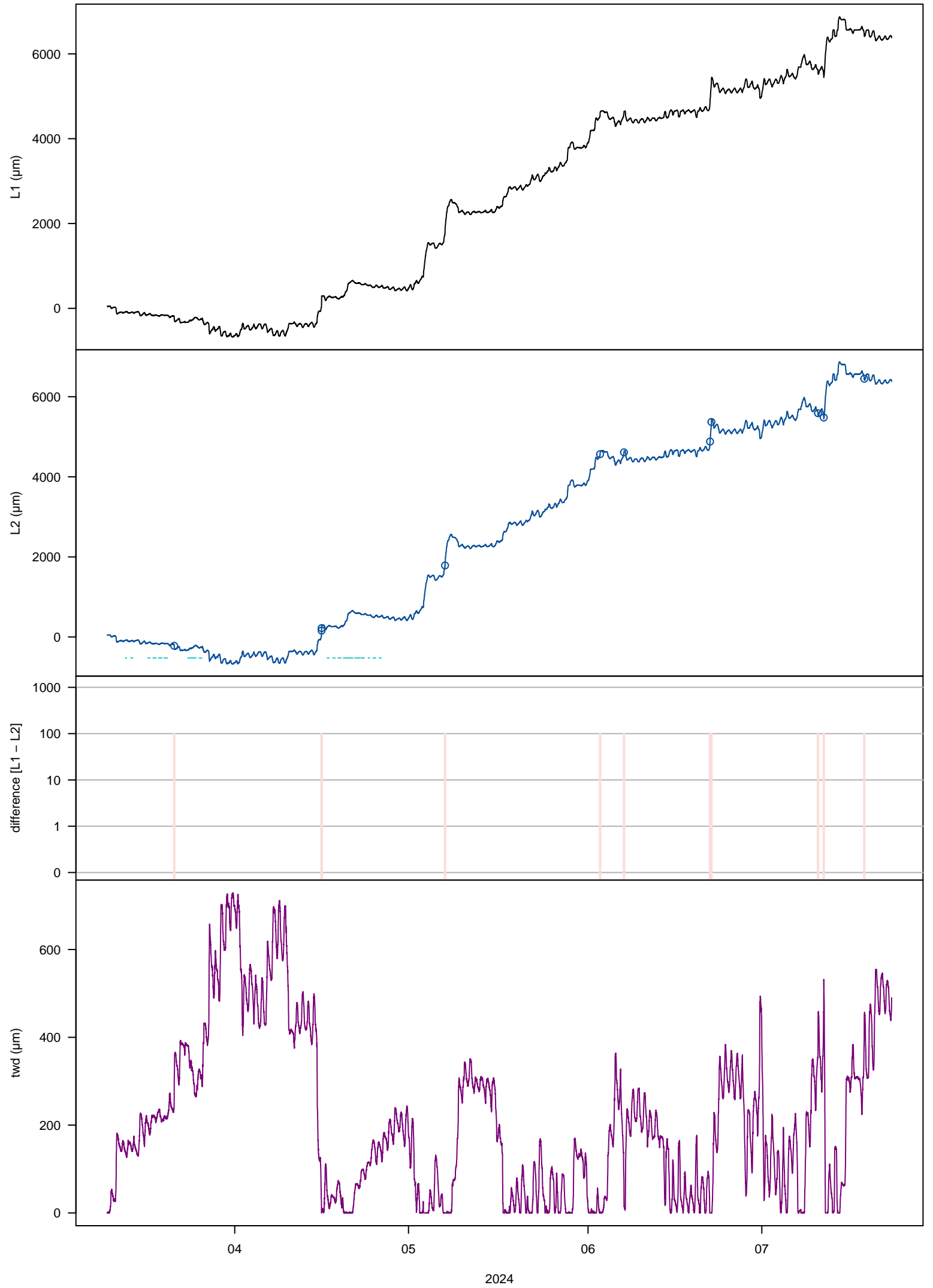
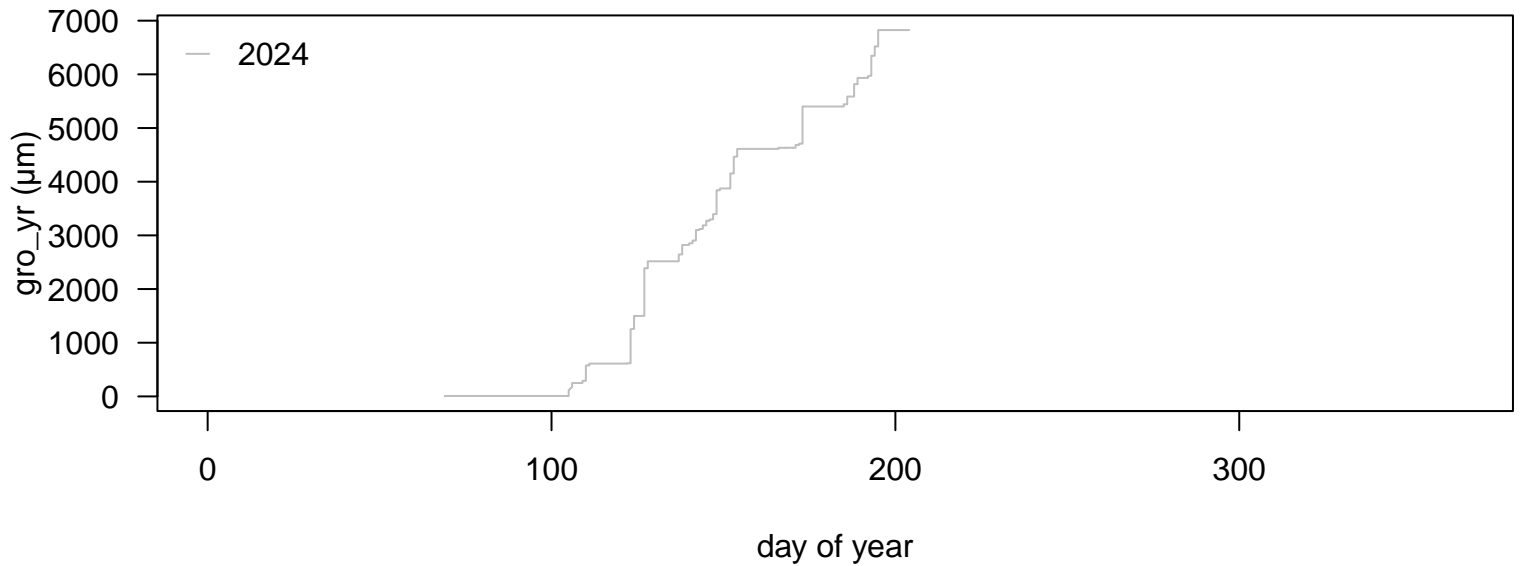


# 11. Increment [mm] 3/3\_5C4



## 11. Increment [mm]\_3/3\_5C4



### input variables

tol\_jump = 50  
tol\_out = 10  
frost\_thr = 5  
lowtemp = 5  
interpol = 48  
frag\_len = 2.1  
tz = UTC

### applied thresholds (μm)

tol\_jump = -1347.32 / 1353.29  
tol\_out = -278.74 / 284.71  
tol\_jump\_frost = -6736.6 / 6766.45  
tol\_out\_frost = -1393.7 / 1423.55

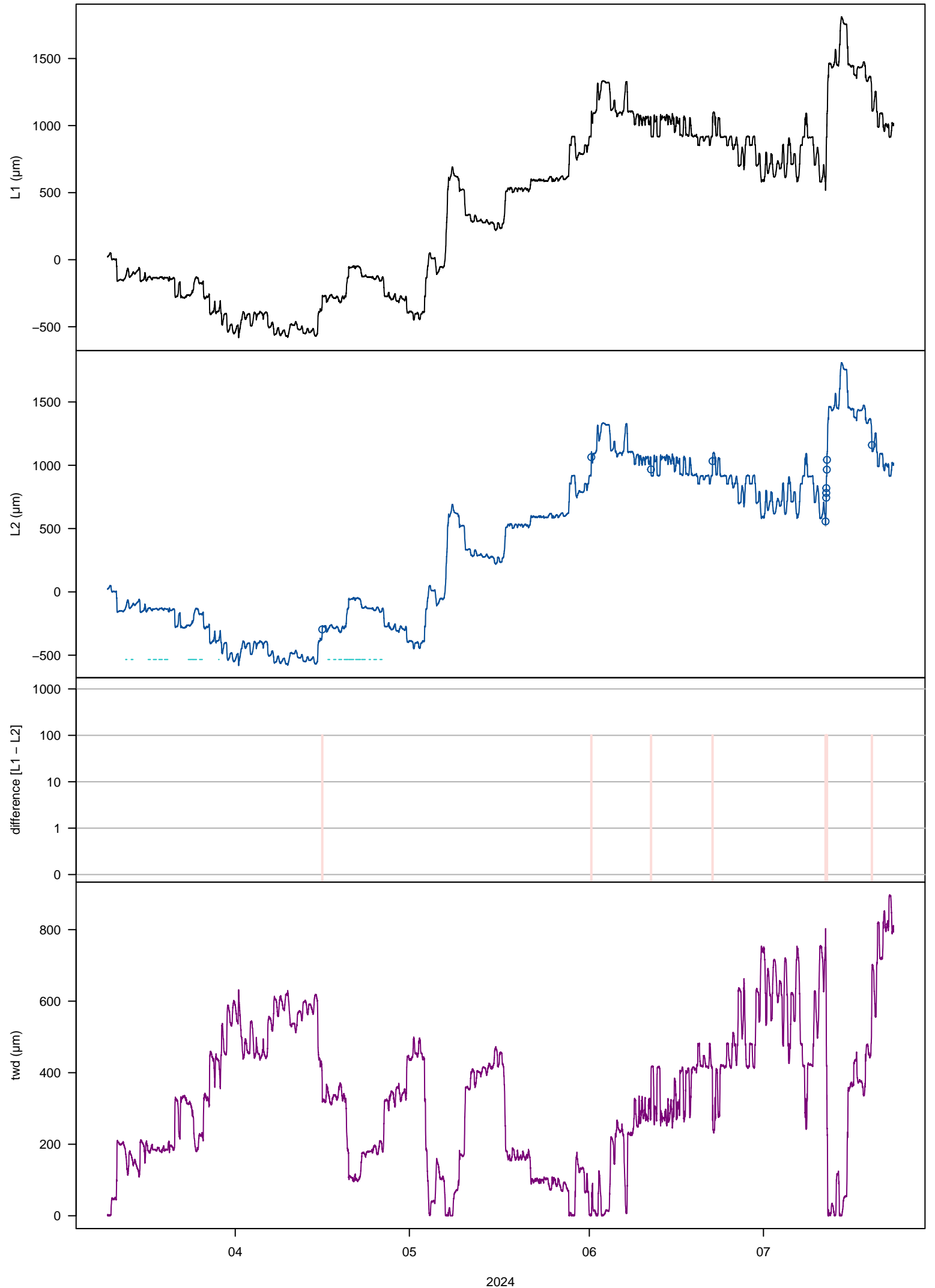
### changes in data

interpolated: 0.06%  
deleted: 0.06%  
missing: 0%

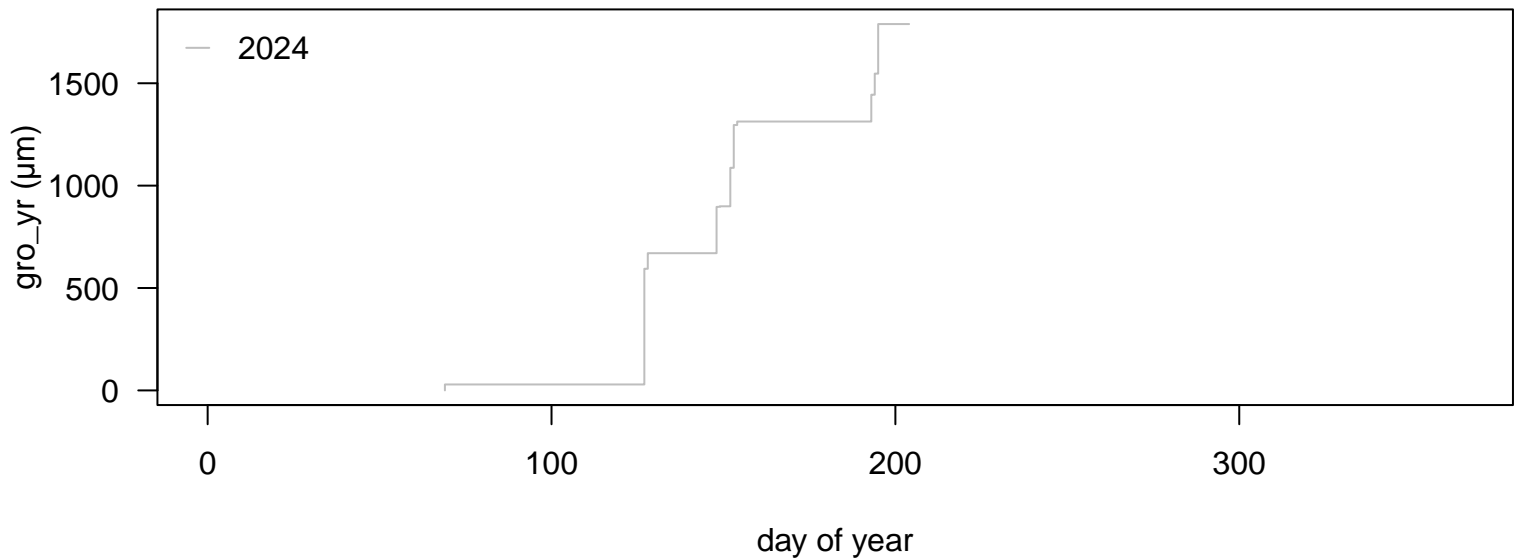
### growth statistics (μm): median (min / max)

month: 1424 (8 / 3263)  
week: 538.5 (8 / 1168)  
day: 111.33 (1 / 889)  
hour: 13 (1 / 147)

# 12. Increment [mm] 3/4\_5D4



## 12. Increment [mm]\_3/4\_5D4



### input variables

tol\_jump = 50  
tol\_out = 10  
frost\_thr = 5  
lowtemp = 5  
interpol = 48  
frag\_len = 2.1  
tz = UTC

### applied thresholds (µm)

tol\_jump = -902.77 / 902.77  
tol\_out = -278.73 / 278.73  
tol\_jump\_frost = -4513.85 / 4513.85  
tol\_out\_frost = -1393.65 / 1393.65

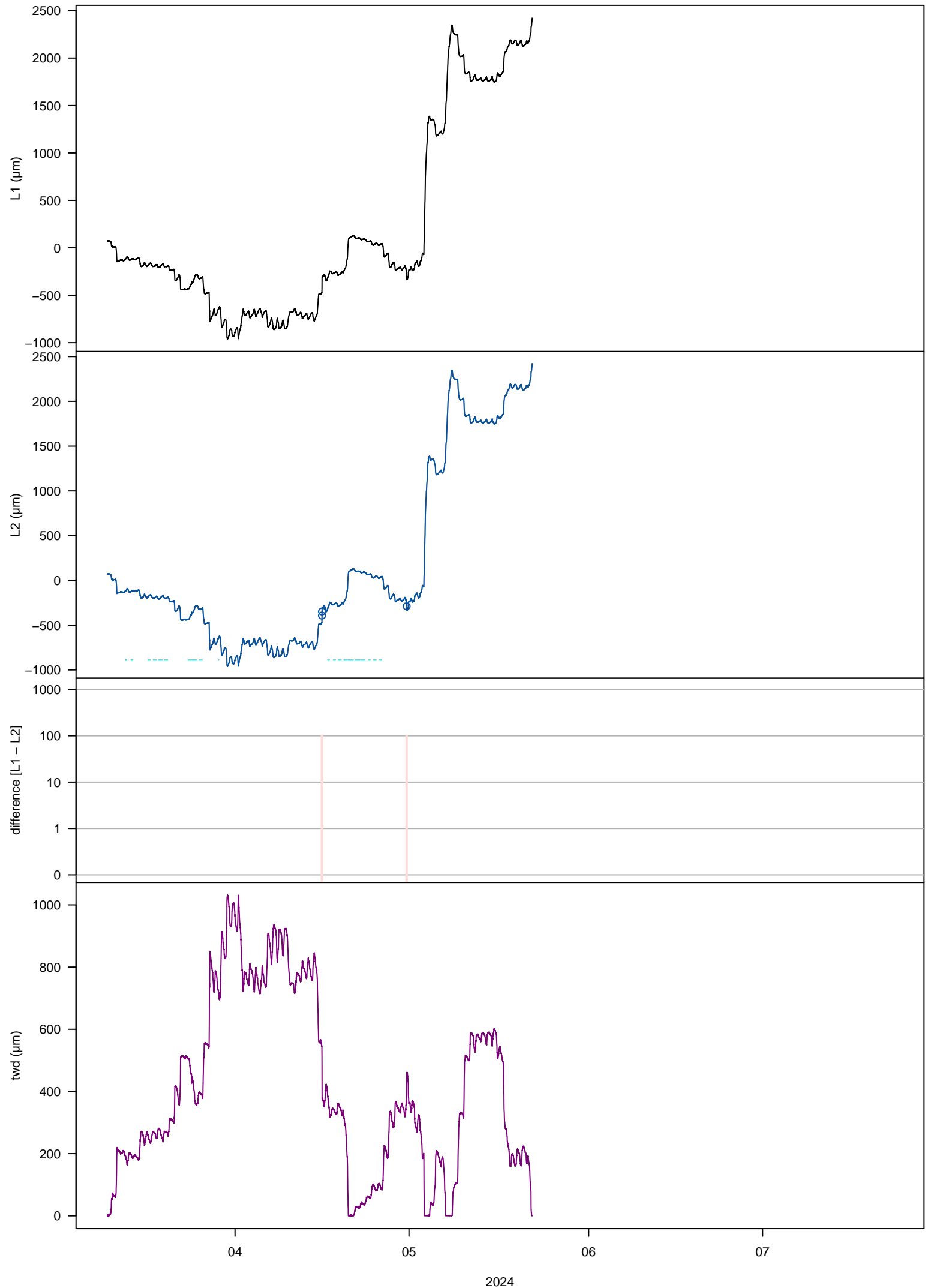
### changes in data

interpolated: 0.06%  
deleted: 0.06%  
missing: 0%

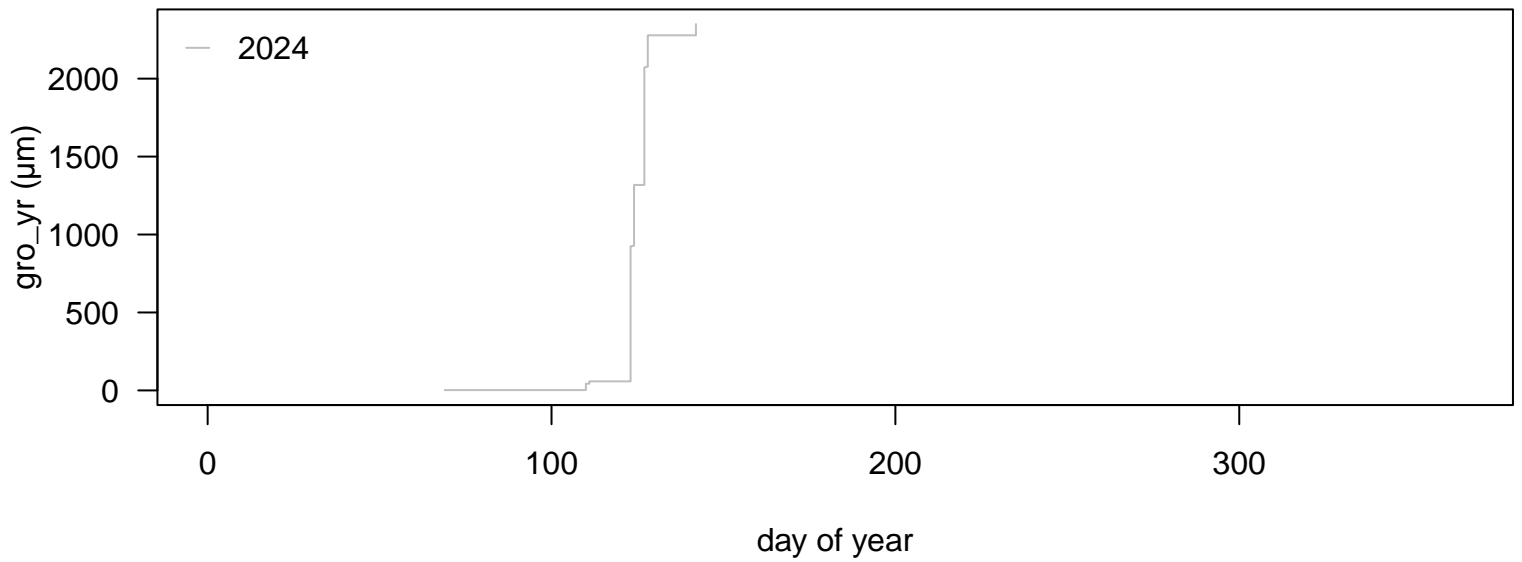
### growth statistics (µm): median (min / max)

month: 445 (29 / 870)  
week: 476 (17 / 641)  
day: 131 (3 / 565)  
hour: 11 (1 / 126)

# 13. Increment [mm]\_4/1\_5A7



### 13. Increment [mm]\_4/1\_5A7



#### input variables

tol\_jump = 50  
tol\_out = 10  
frost\_thr = 5  
lowtemp = 5  
interpol = 48  
frag\_len = 2.1  
tz = UTC

#### applied thresholds (μm)

tol\_jump = -1345.6 / 1345.62  
tol\_out = -278.71 / 278.74  
tol\_jump\_frost = -6728 / 6728.1  
tol\_out\_frost = -1393.55 / 1393.7

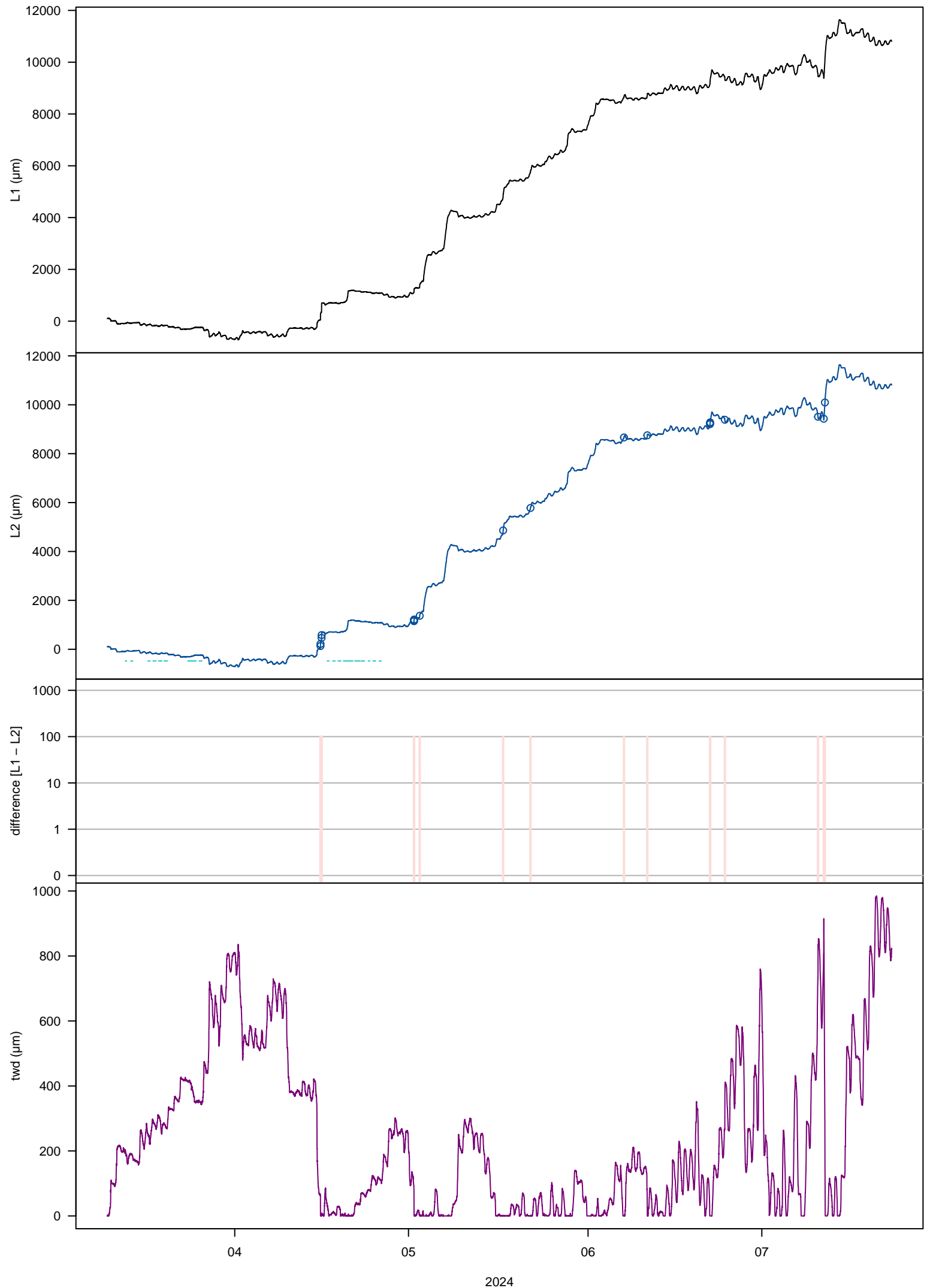
#### changes in data

interpolated: 0.02%  
deleted: 0.02%  
missing: 45.9%

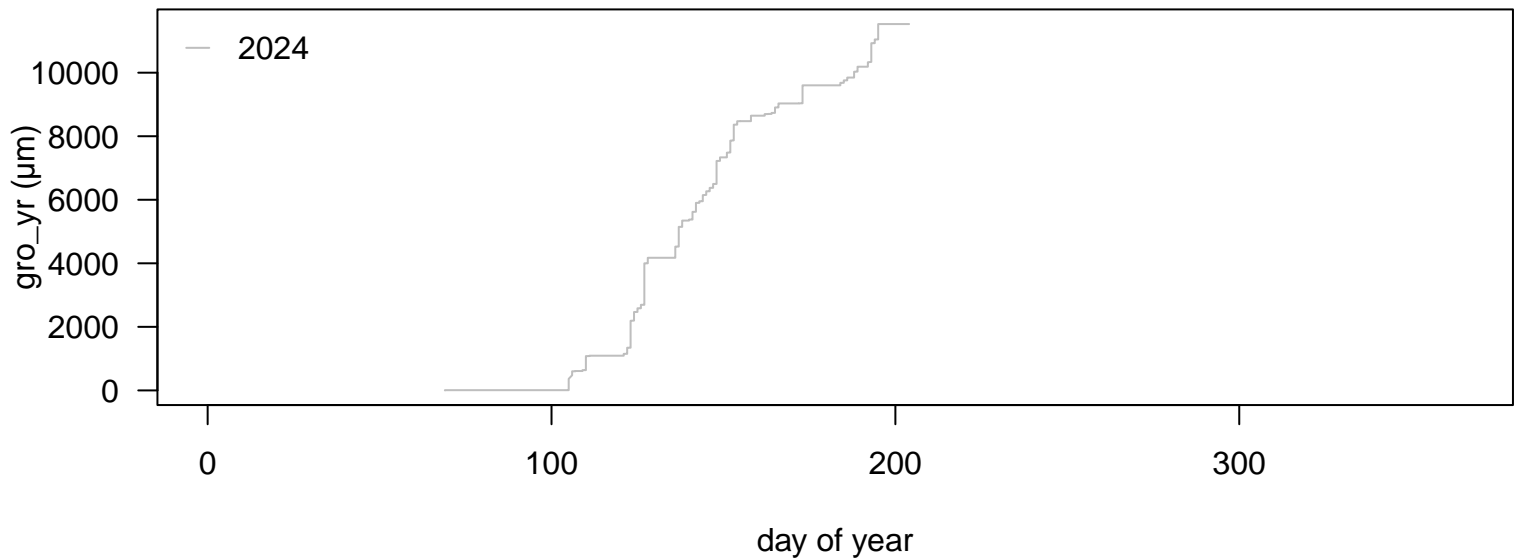
#### growth statistics (μm): median (min / max)

month: 56 (2 / 2292)  
week: 72 (2 / 1260)  
day: 139 (2 / 866)  
hour: 17 (1 / 195)

# 15. Increment [mm]\_4/3\_5C5



## 15. Increment [mm]\_4/3\_5C5



### input variables

tol\_jump = 50  
tol\_out = 10  
frost\_thr = 5  
lowtemp = 5  
interpol = 48  
frag\_len = 2.1  
tz = UTC

### applied thresholds (μm)

tol\_jump = -1346.46 / 1352.46  
tol\_out = -278.9 / 284.9  
tol\_jump\_frost = -6732.3 / 6762.3  
tol\_out\_frost = -1394.5 / 1424.5

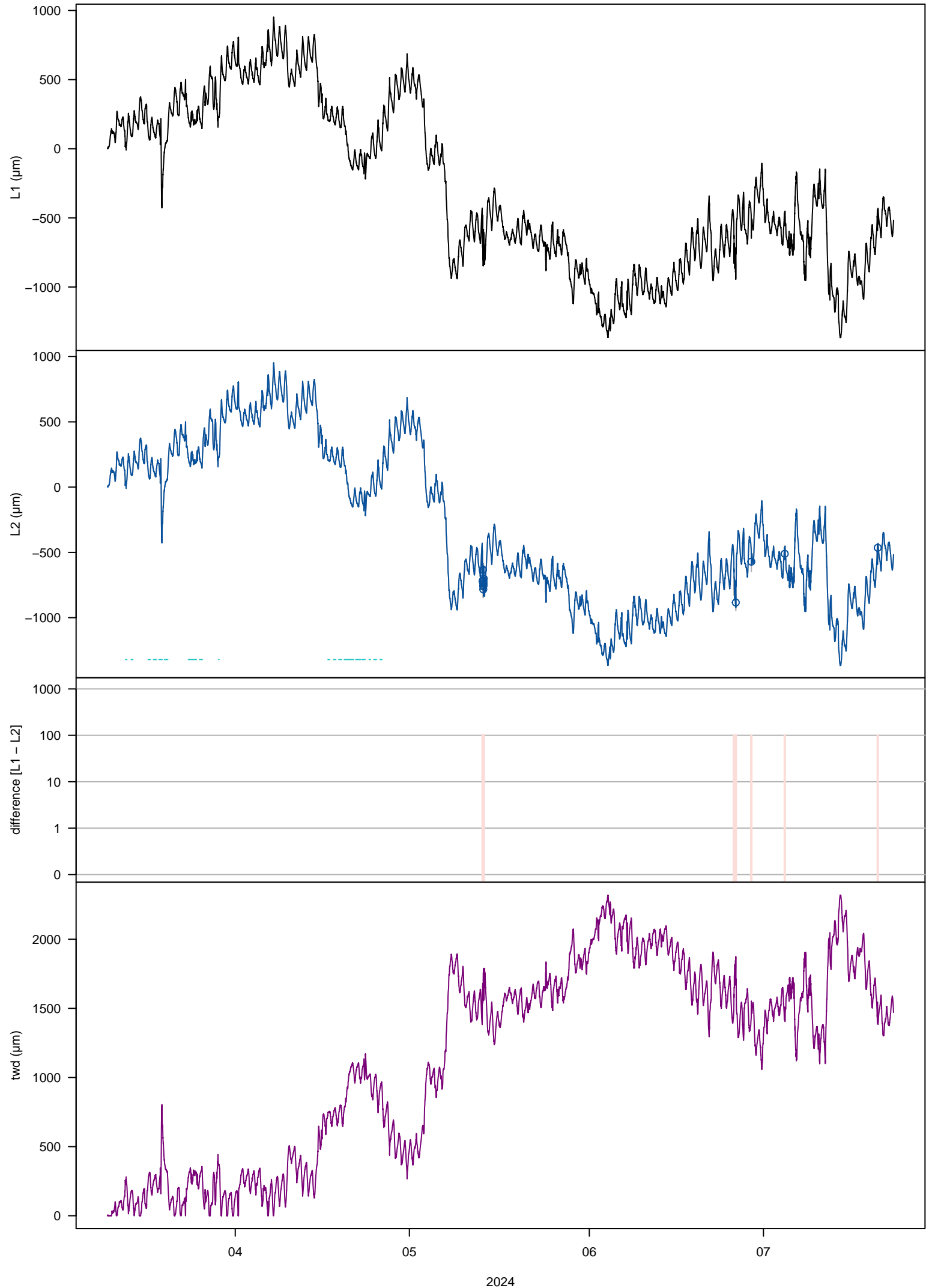
### changes in data

interpolated: 0.1%  
deleted: 0.1%  
missing: 0%

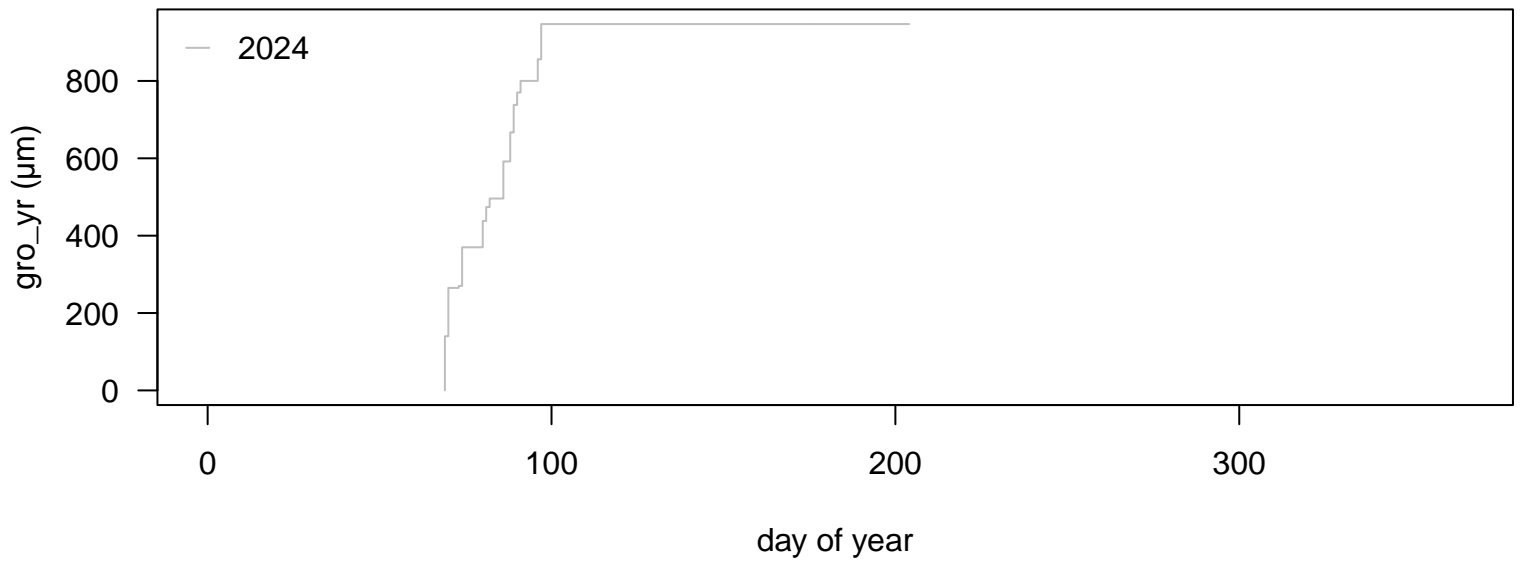
### growth statistics (μm): median (min / max)

month: 1928 (7 / 6391)  
week: 1057.5 (7 / 1989)  
day: 144.5 (1 / 1305)  
hour: 17 (1 / 236.33)

# 16. Increment [mm]\_4/4\_5D6



## 16. Increment [mm]\_4/4\_5D6



### input variables

tol\_jump = 50  
tol\_out = 10  
frost\_thr = 5  
lowtemp = 5  
interpol = 48  
frag\_len = 2.1  
tz = UTC

### applied thresholds (μm)

tol\_jump = -2692.92 / 2704.91  
tol\_out = -557.79 / 569.79  
tol\_jump\_frost = -13464.6 / 13524.55  
tol\_out\_frost = -2788.95 / 2848.95

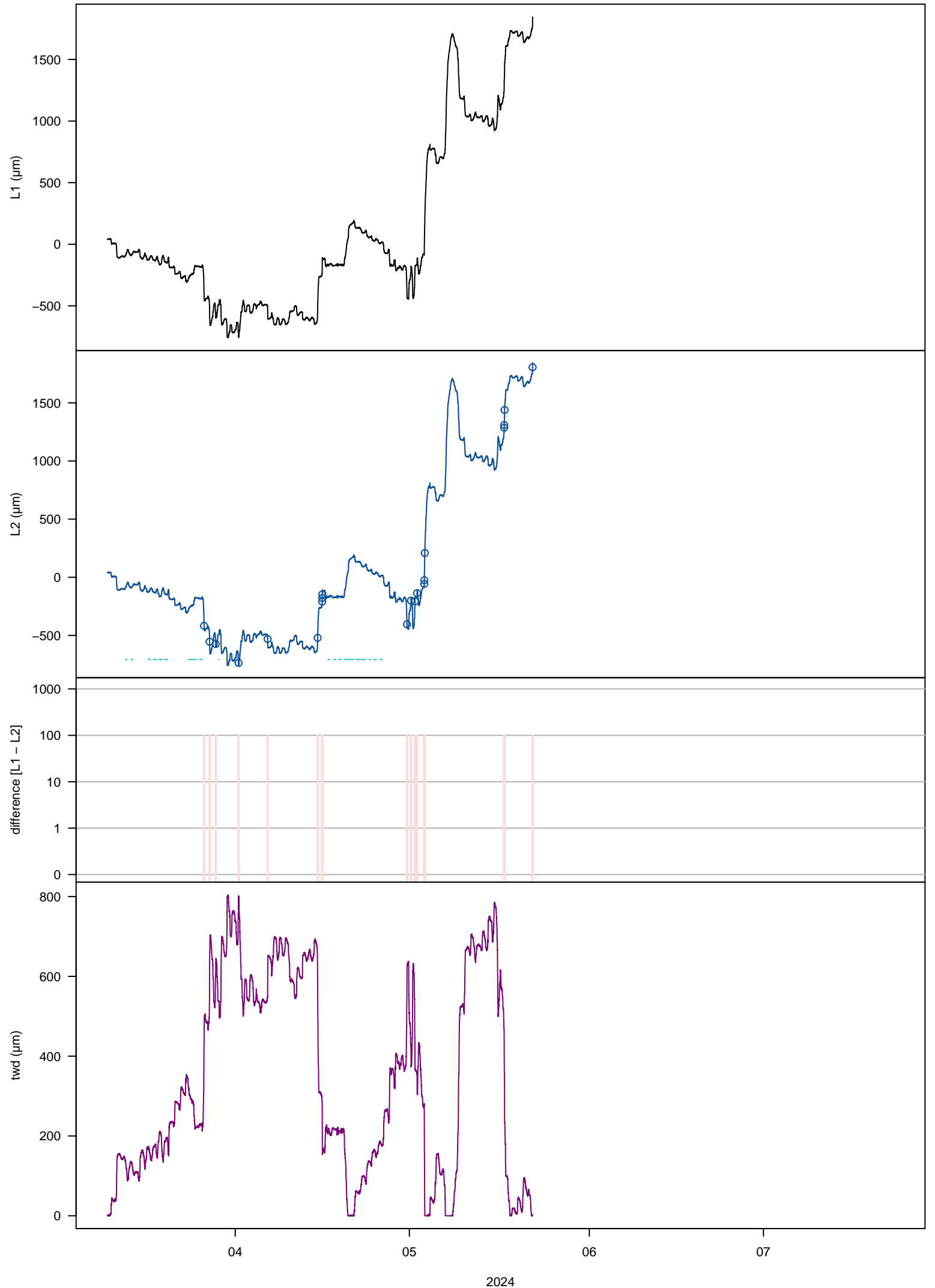
### changes in data

interpolated: 0.09%  
deleted: 0.11%  
missing: 0%

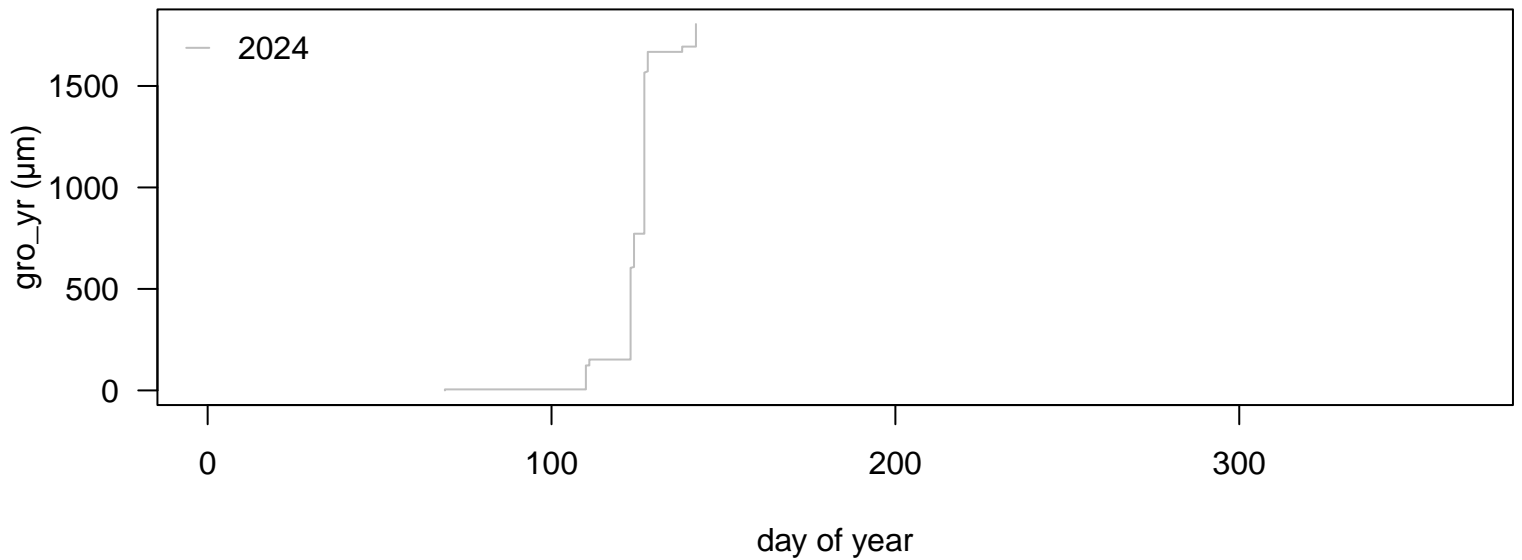
### growth statistics (μm): median (min / max)

month: 473.5 (177 / 770)  
week: 177 (126 / 274)  
day: 69.5 (5 / 140)  
hour: 16 (1 / 68)

# 17. Increment [mm]\_5/1\_5A8



## 17. Increment [mm]\_5/1\_5A8



### input variables

tol\_jump = 50  
tol\_out = 10  
frost\_thr = 5  
lowtemp = 5  
interpol = 48  
frag\_len = 2.1  
tz = UTC

### applied thresholds (μm)

tol\_jump = -902.77 / 902.77  
tol\_out = -190.16 / 190.16  
tol\_jump\_frost = -4513.85 / 4513.85  
tol\_out\_frost = -950.8 / 950.8

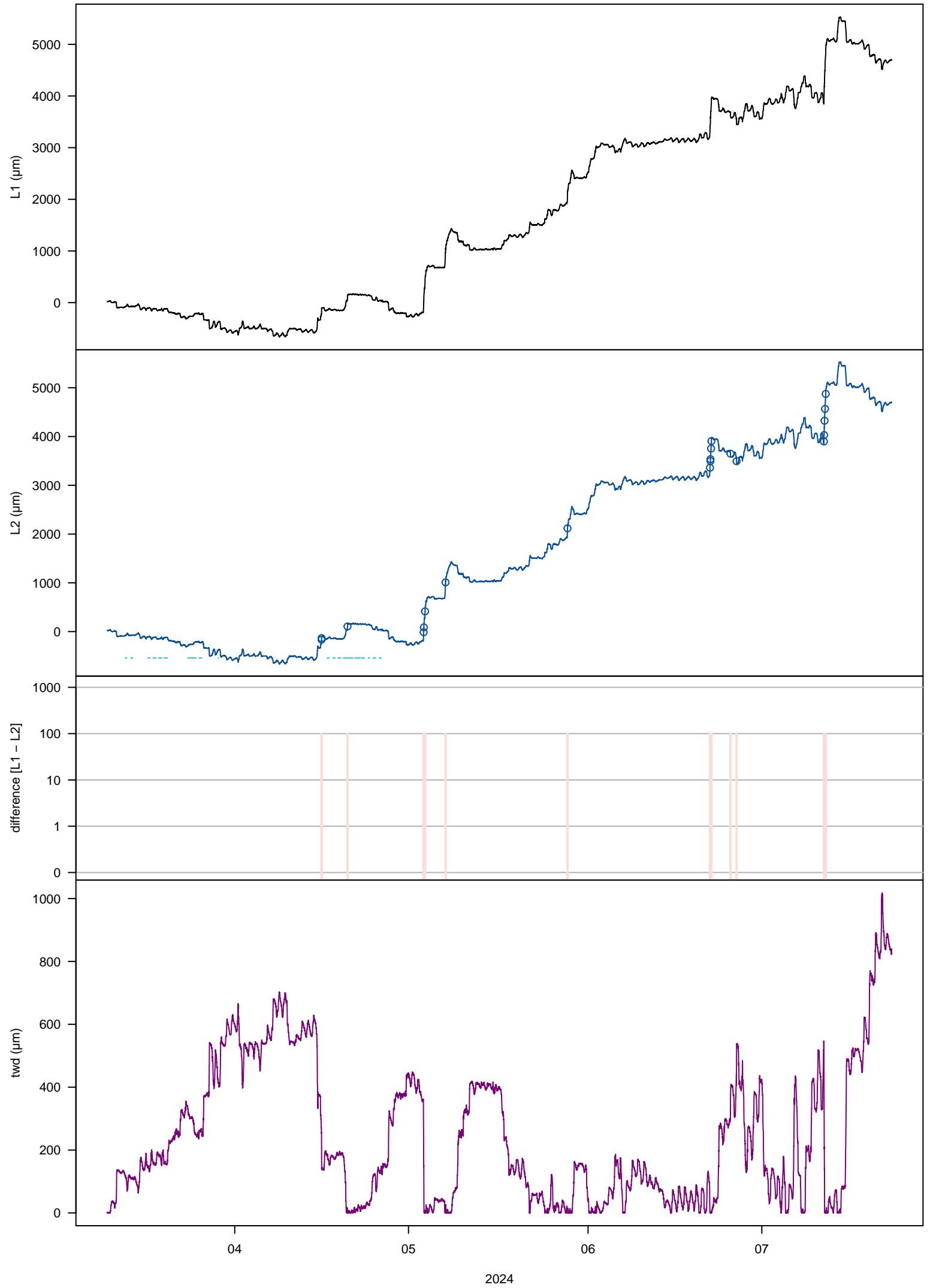
### changes in data

interpolated: 0.1%  
deleted: 0.1%  
missing: 45.9%

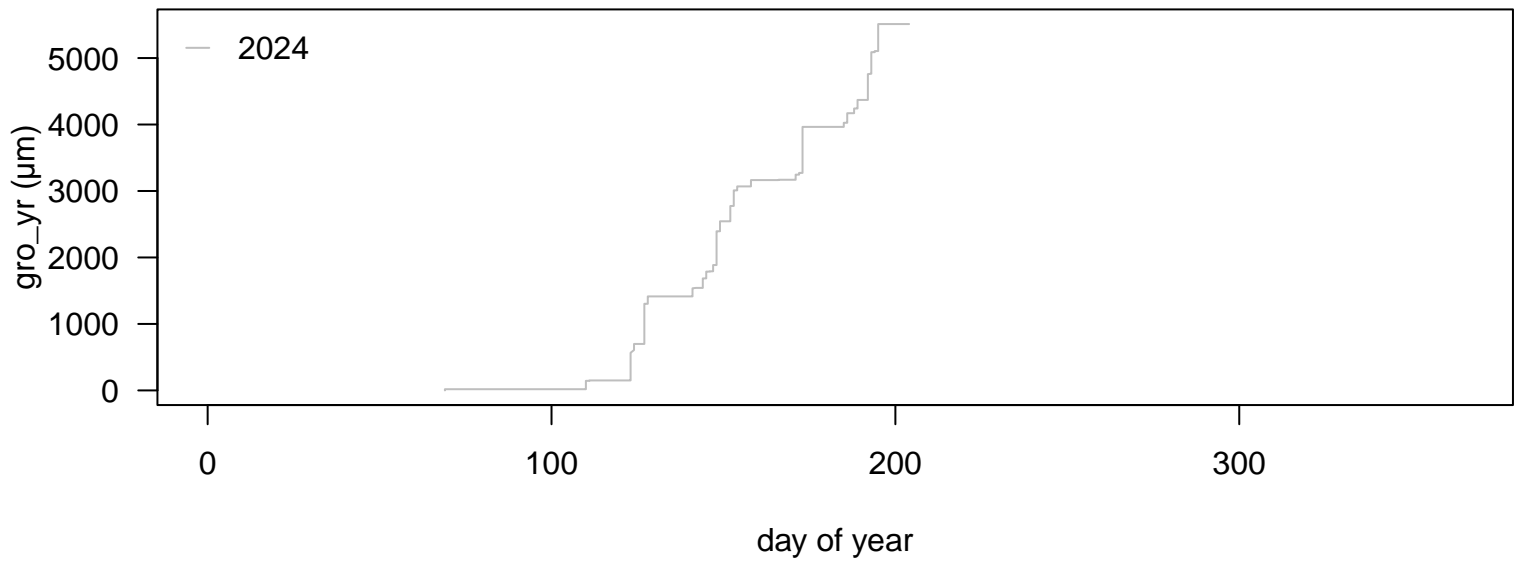
### growth statistics (μm): median (min / max)

month: 147 (5 / 1653)  
week: 129 (5 / 896)  
day: 111 (5 / 794)  
hour: 11 (1 / 103)

# 19. Increment [mm]\_5/3\_5C6



## 19. Increment [mm]\_5/3\_5C6



### input variables

tol\_jump = 50  
tol\_out = 10  
frost\_thr = 5  
lowtemp = 5  
interpol = 48  
frag\_len = 2.1  
tz = UTC

### applied thresholds (μm)

tol\_jump = -1346.46 / 1352.46  
tol\_out = -278.9 / 284.89  
tol\_jump\_frost = -6732.3 / 6762.3  
tol\_out\_frost = -1394.5 / 1424.45

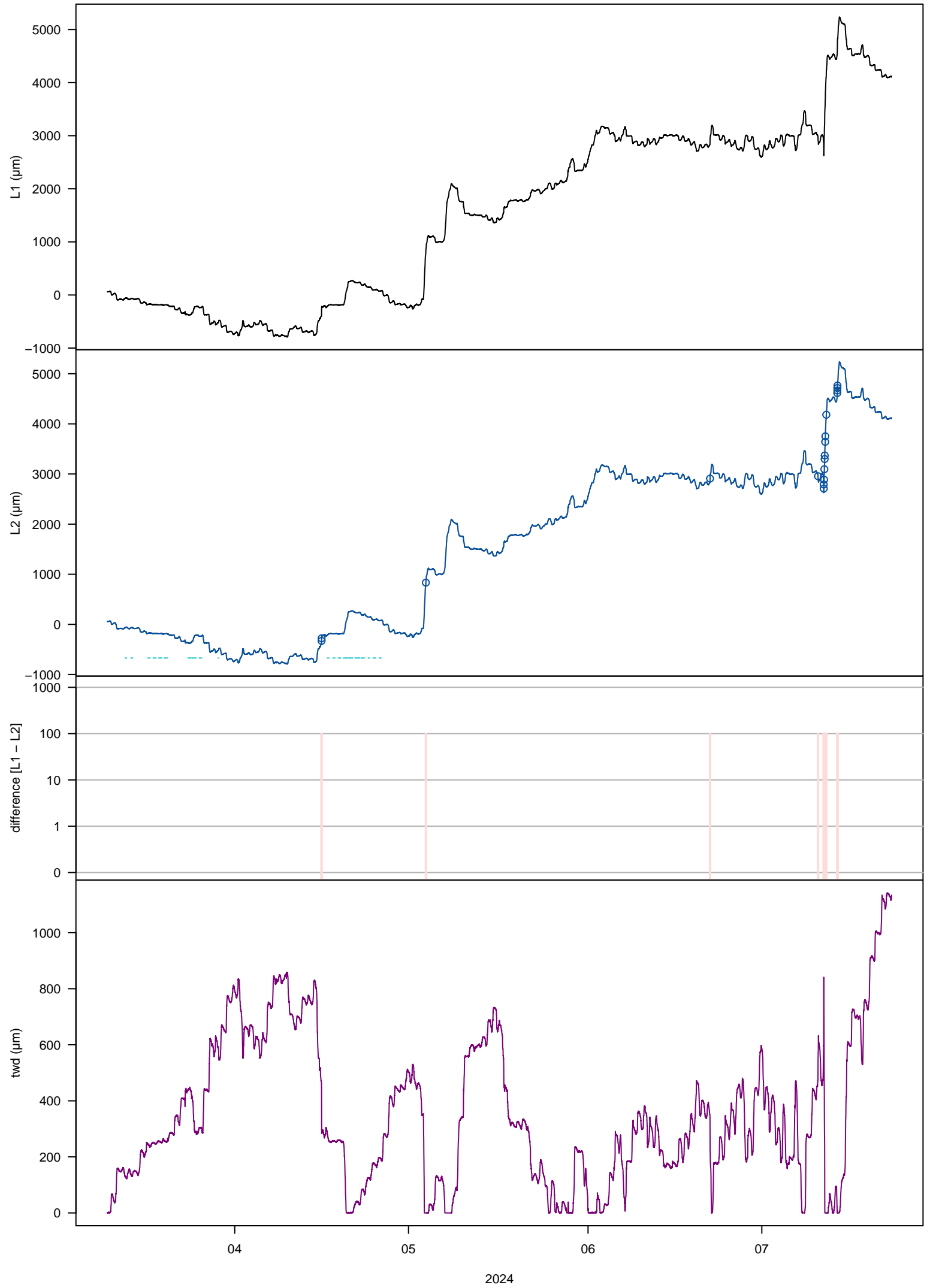
### changes in data

interpolated: 0.1%  
deleted: 0.1%  
missing: 0%

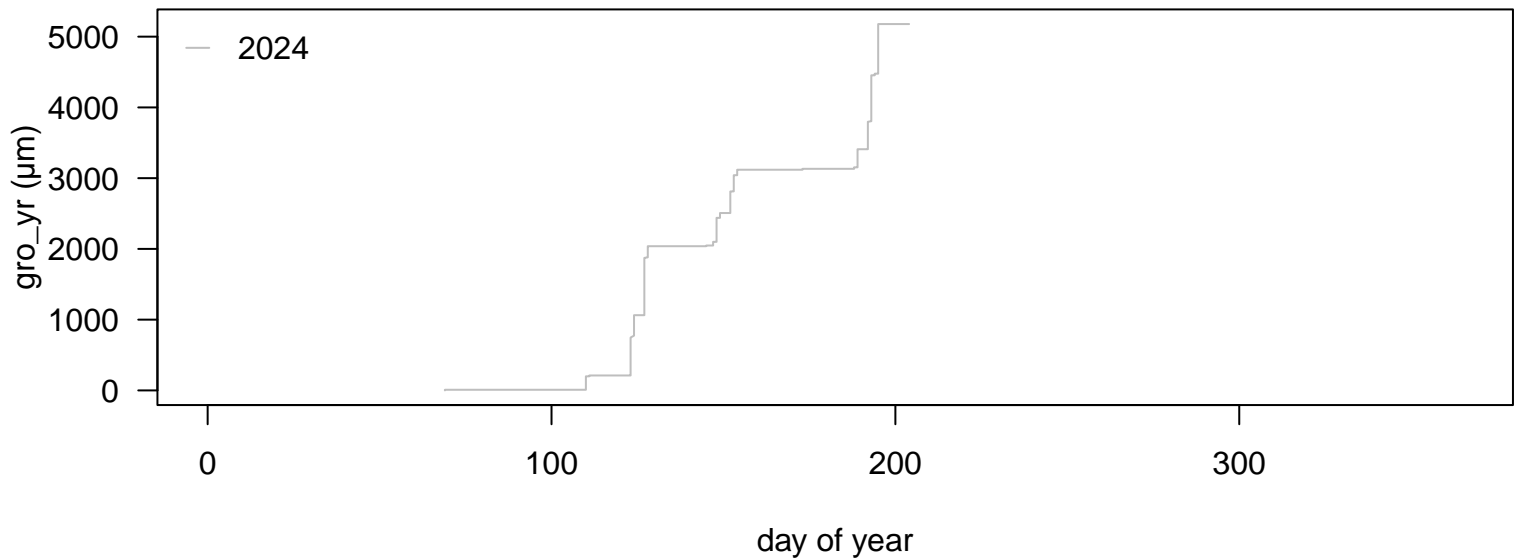
### growth statistics (μm): median (min / max)

month: 1420 (18 / 2394)  
week: 377 (5 / 1270)  
day: 122 (4 / 692)  
hour: 13 (1 / 179)

# 20. Increment [mm]\_5/4\_5D7



## 20. Increment [mm]\_5/4\_5D7



### input variables

tol\_jump = 50  
tol\_out = 10  
frost\_thr = 5  
lowtemp = 5  
interpol = 48  
frag\_len = 2.1  
tz = UTC

### applied thresholds (µm)

tol\_jump = -1345.61 / 1345.62  
tol\_out = -278.73 / 278.74  
tol\_jump\_frost = -6728.05 / 6728.1  
tol\_out\_frost = -1393.65 / 1393.7

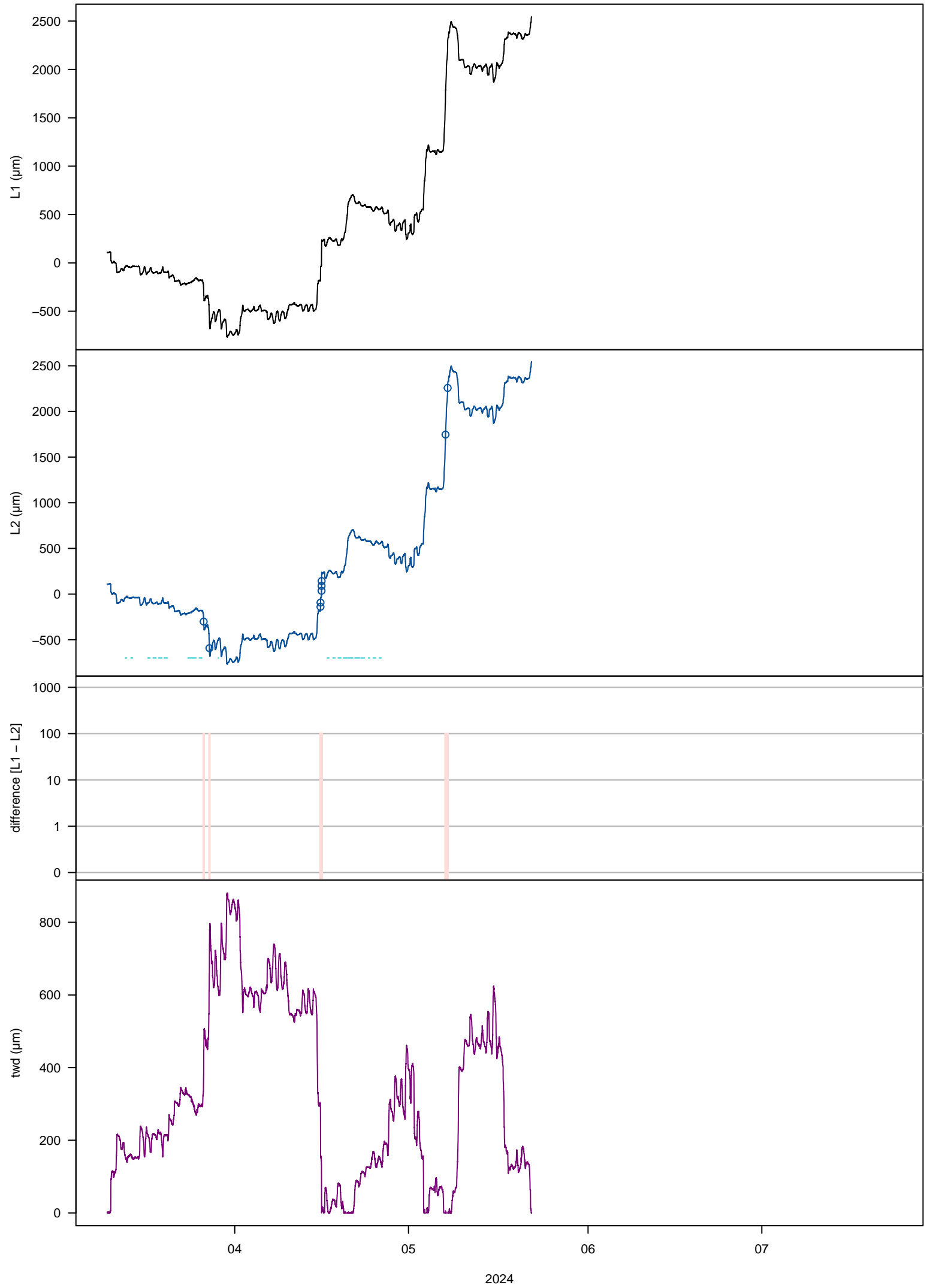
### changes in data

interpolated: 0.09%  
deleted: 0.09%  
missing: 0%

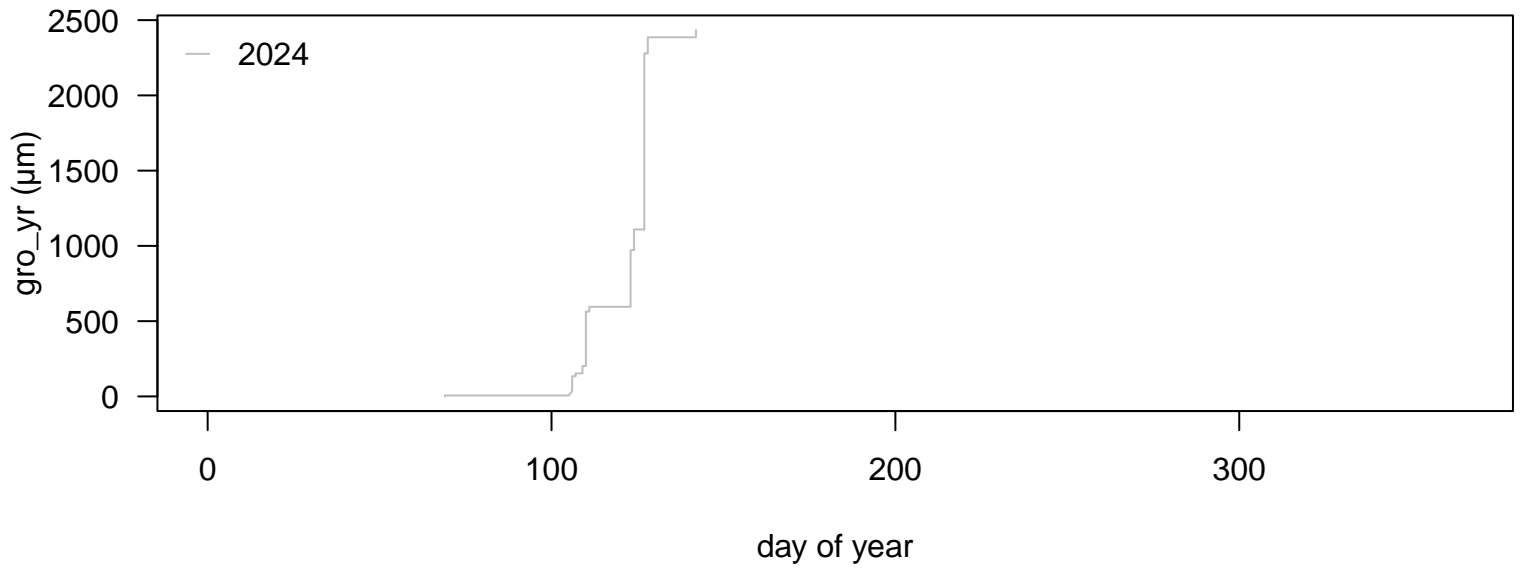
### growth statistics (µm): median (min / max)

month: 625 (9 / 2296)  
week: 139.5 (9 / 2025)  
day: 190 (9 / 810)  
hour: 14 (1 / 213.8)

# 21. Increment [mm]\_6/1\_5A9



## 21. Increment [mm]\_6/1\_5A9



### input variables

tol\_jump = 50  
tol\_out = 10  
frost\_thr = 5  
lowtemp = 5  
interpol = 48  
frag\_len = 2.1  
tz = UTC

### applied thresholds (µm)

tol\_jump = -1345.6 / 1345.62  
tol\_out = -279.08 / 279.08  
tol\_jump\_frost = -6728 / 6728.1  
tol\_out\_frost = -1395.4 / 1395.4

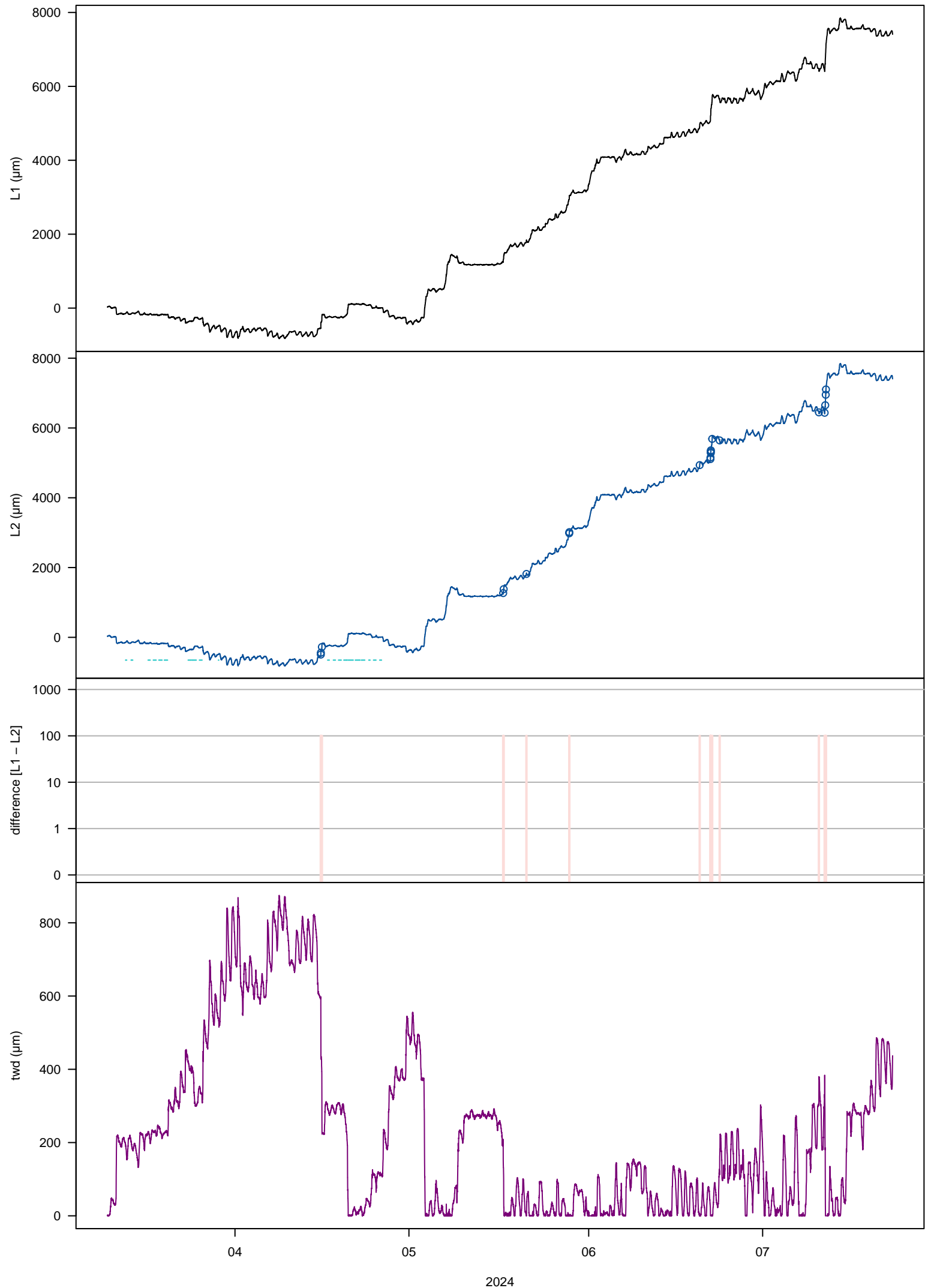
### changes in data

interpolated: 0.05%  
deleted: 0.05%  
missing: 45.9%

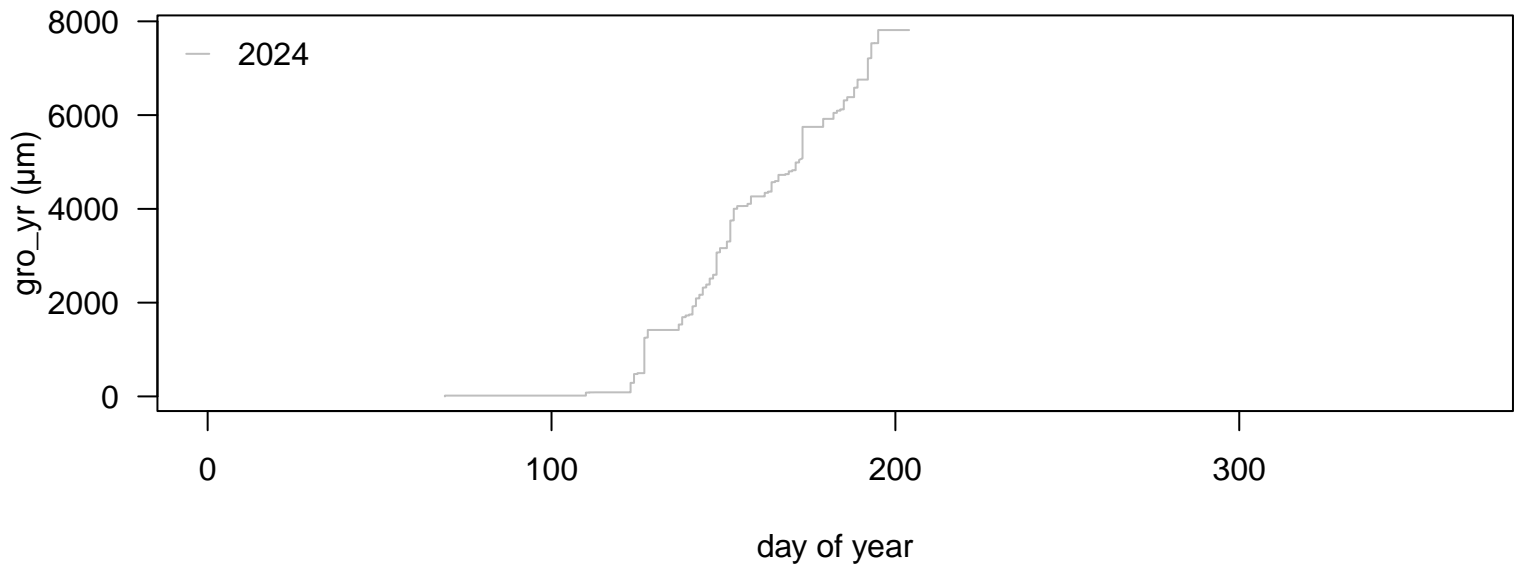
### growth statistics (µm): median (min / max)

month: 589 (6 / 1839)  
week: 514 (6 / 1277)  
day: 107 (6 / 1170)  
hour: 13 (1 / 142)

### 23. Increment [mm]\_6/3\_5C8



## 23. Increment [mm]\_6/3\_5C8



### input variables

tol\_jump = 50  
tol\_out = 10  
frost\_thr = 5  
lowtemp = 5  
interpol = 48  
frag\_len = 2.1  
tz = UTC

### applied thresholds ( $\mu\text{m}$ )

tol\_jump = -1347.32 / 1353.29  
tol\_out = -279.08 / 285.07  
tol\_jump\_frost = -6736.6 / 6766.45  
tol\_out\_frost = -1395.4 / 1425.35

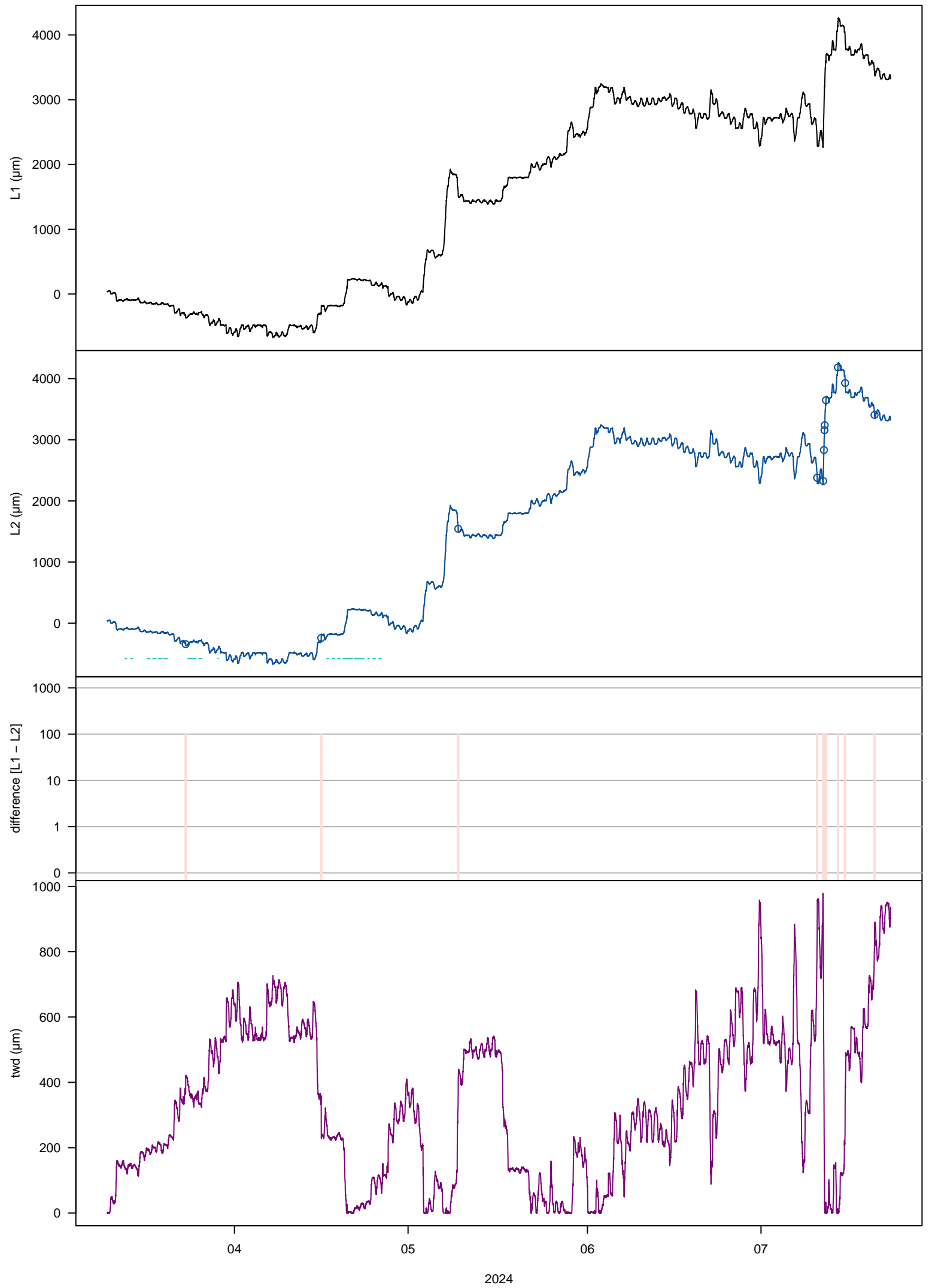
### changes in data

interpolated: 0.11%  
deleted: 0.11%  
missing: 0%

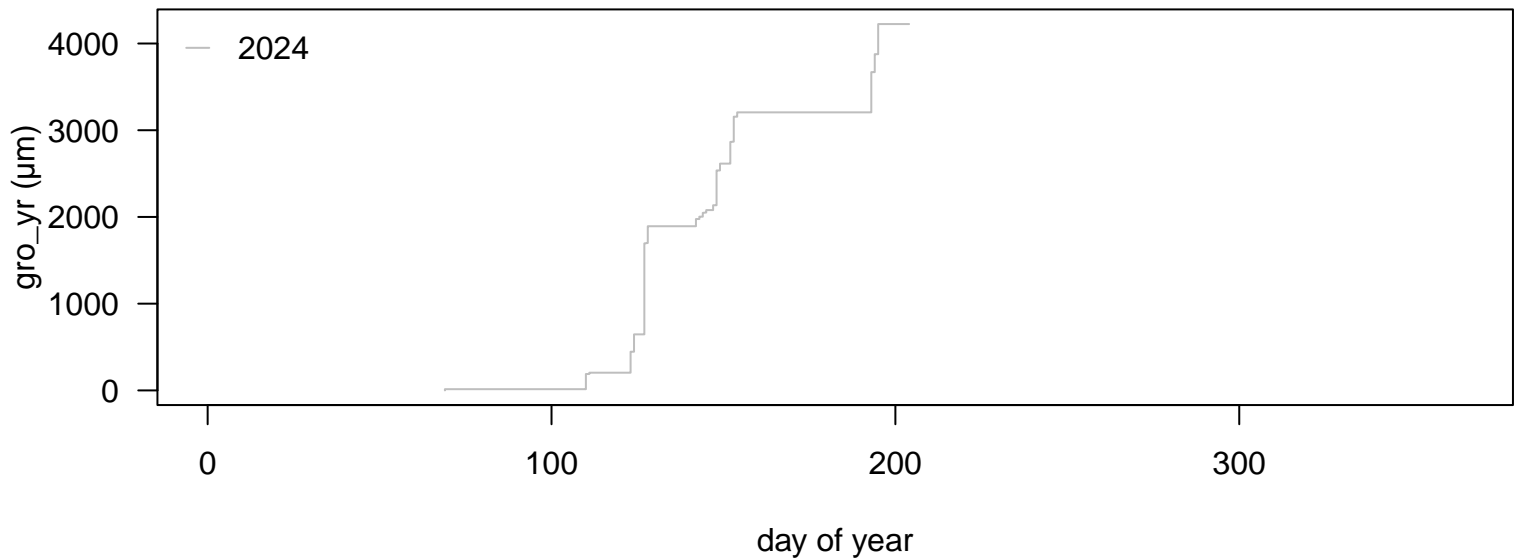
### growth statistics ( $\mu\text{m}$ ): median (min / max)

month: 1894 (17 / 3215)  
week: 434 (1 / 1488)  
day: 122 (1 / 754)  
hour: 12 (1 / 150.75)

# 24. Increment [mm]\_6/4\_5D8



## 24. Increment [mm]\_6/4\_5D8



### input variables

tol\_jump = 50  
tol\_out = 10  
frost\_thr = 5  
lowtemp = 5  
interpol = 48  
frag\_len = 2.1  
tz = UTC

### applied thresholds (μm)

tol\_jump = -1346.46 / 1352.46  
tol\_out = -284.97 / 284.98  
tol\_jump\_frost = -6732.3 / 6762.3  
tol\_out\_frost = -1424.85 / 1424.9

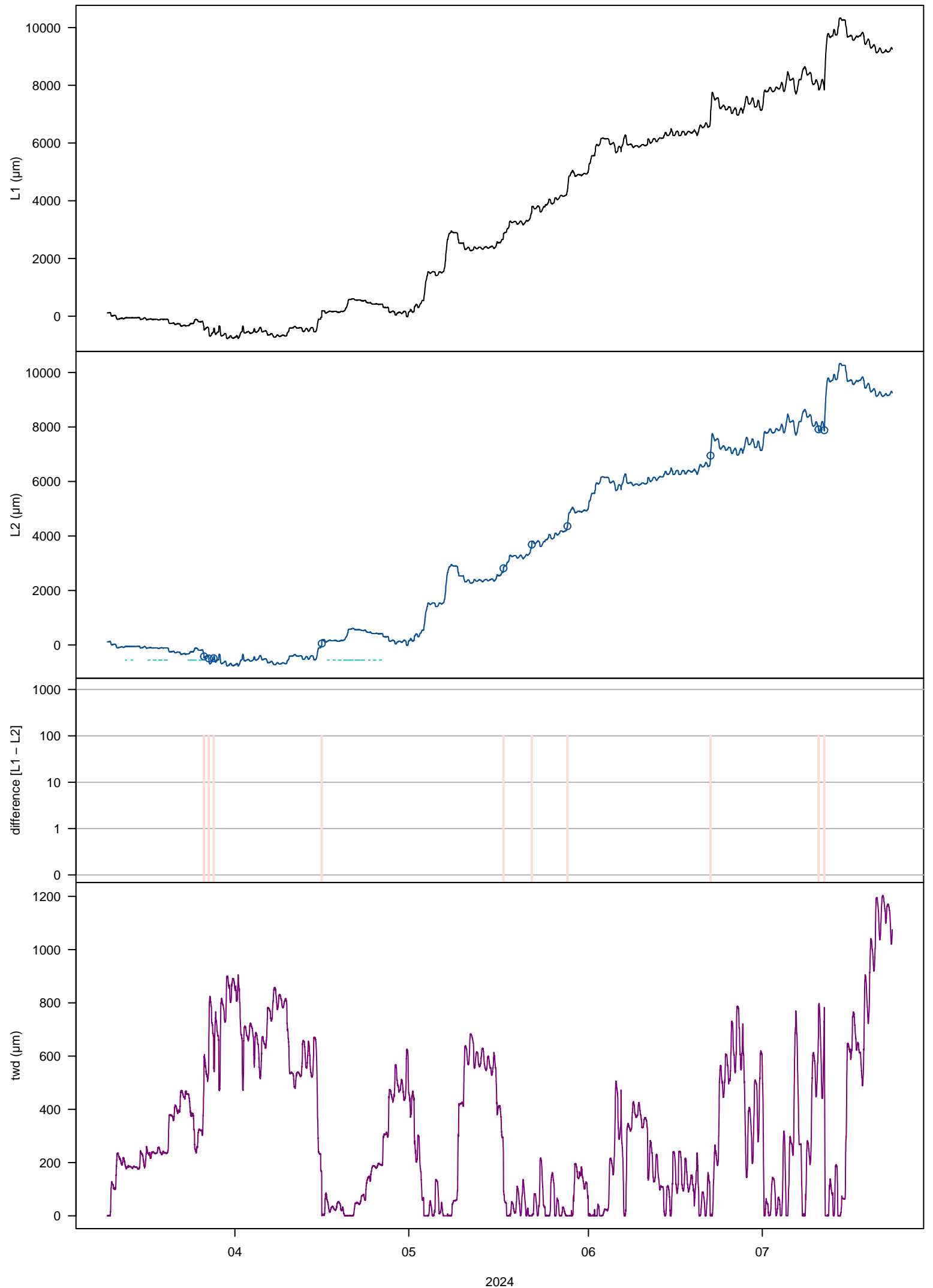
### changes in data

interpolated: 0.06%  
deleted: 0.06%  
missing: 0%

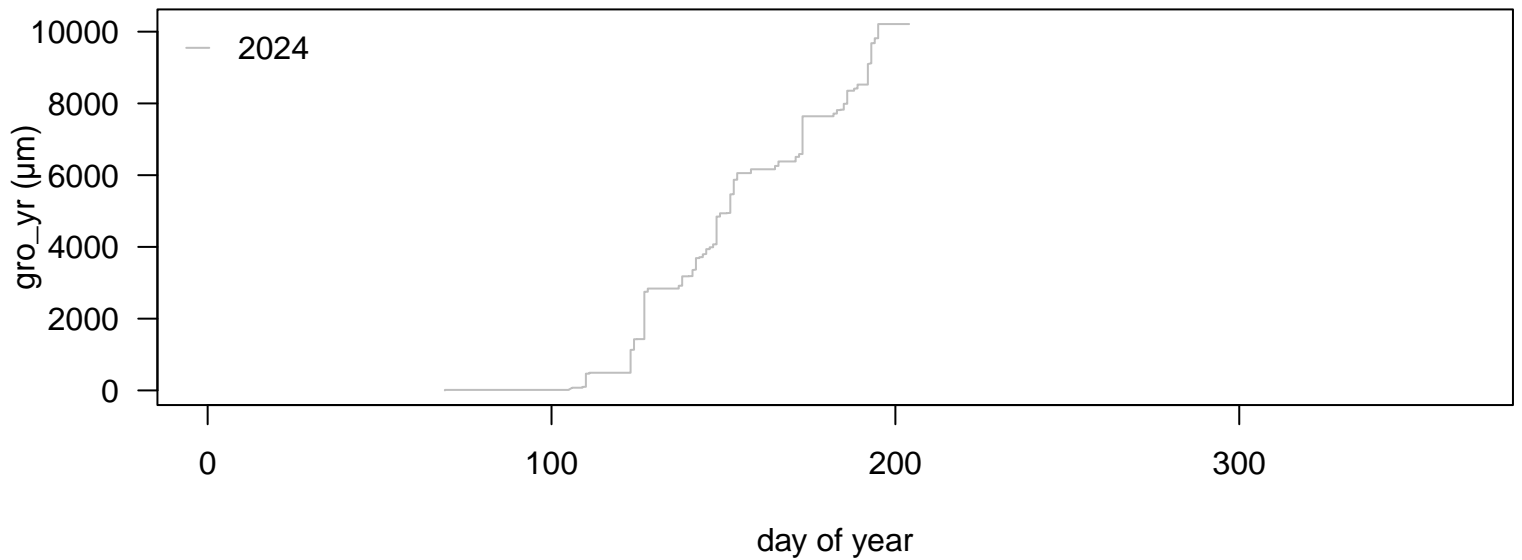
### growth statistics (μm): median (min / max)

month: 591 (14 / 2411)  
week: 316 (14 / 1247)  
day: 186.5 (14 / 1049)  
hour: 17 (1 / 124)

### 3. Increment [mm]\_1/3\_5C2



### 3. Increment [mm] 1/3\_5C2



#### input variables

tol\_jump = 50  
tol\_out = 10  
frost\_thr = 5  
lowtemp = 5  
interpol = 48  
frag\_len = 2.1  
tz = UTC

#### applied thresholds (μm)

tol\_jump = -1796.13 / 1796.14  
tol\_out = -373.63 / 379.63  
tol\_jump\_frost = -8980.65 / 8980.7  
tol\_out\_frost = -1868.15 / 1898.15

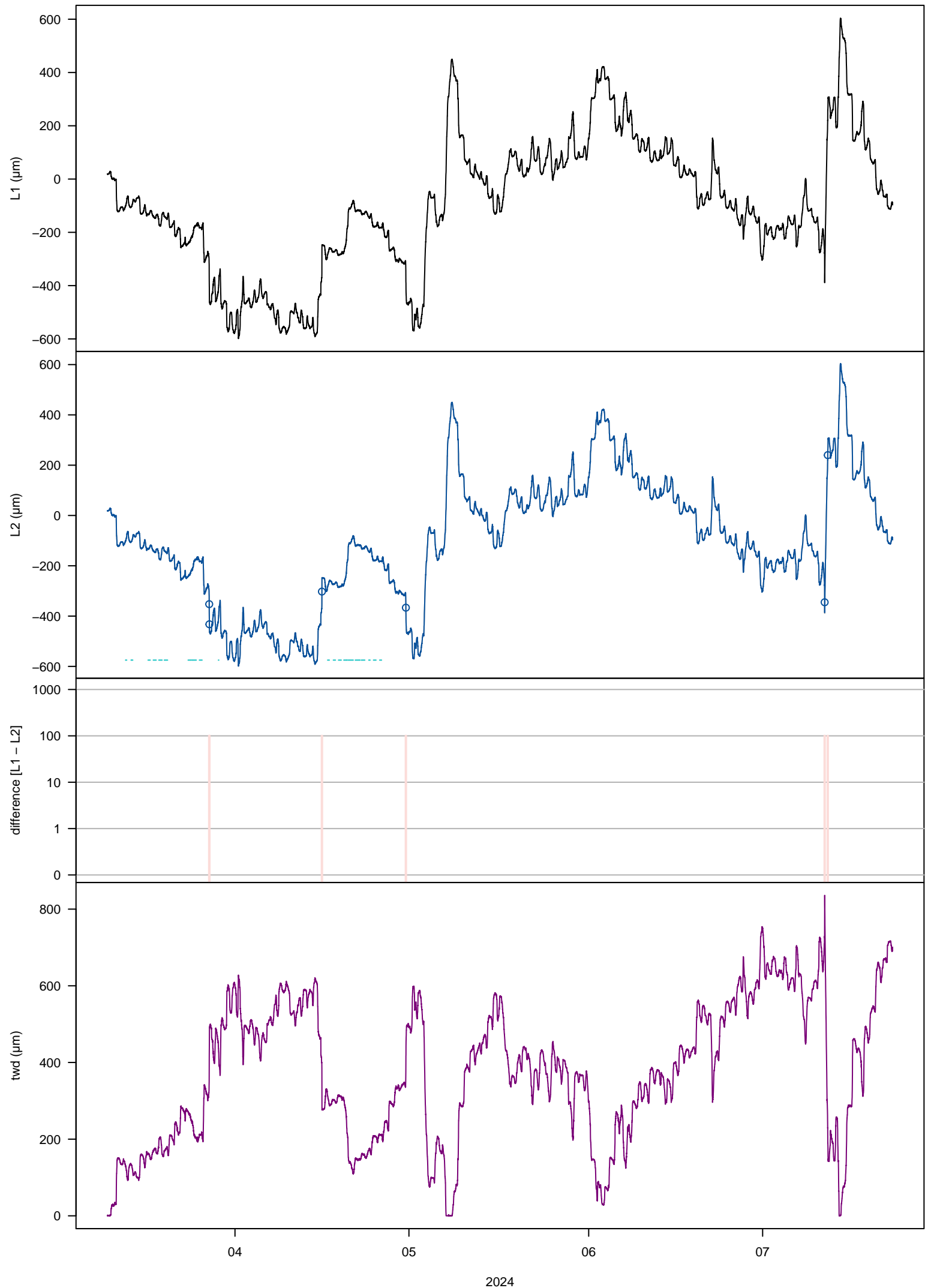
#### changes in data

interpolated: 0.05%  
deleted: 0.05%  
missing: 0%

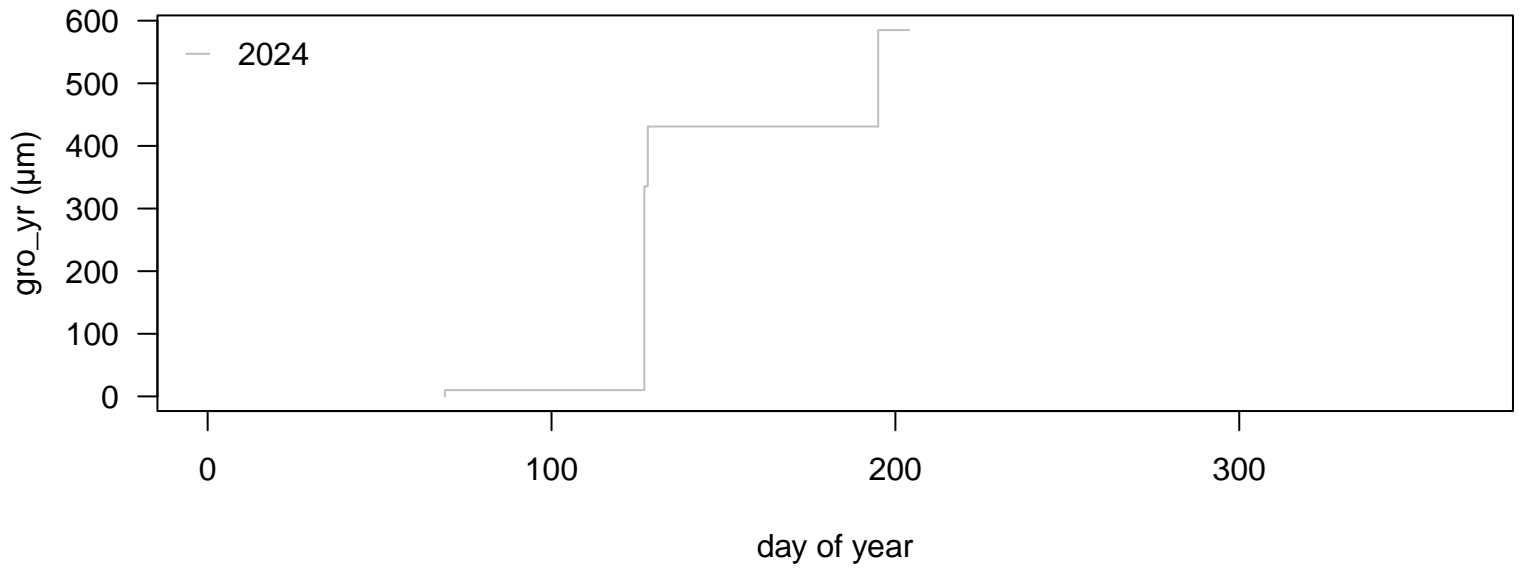
#### growth statistics (μm): median (min / max)

month: 2570 (14 / 4450)  
week: 789.5 (14 / 1881)  
day: 110.5 (3 / 1319)  
hour: 20 (1 / 234)

### 4. Increment [mm] 1/4\_5D1



## 4. Increment [mm] 1/4\_5D1



### input variables

tol\_jump = 50  
tol\_out = 10  
frost\_thr = 5  
lowtemp = 5  
interpol = 48  
frag\_len = 2.1  
tz = UTC

### applied thresholds (µm)

tol\_jump = -901.49 / 901.49  
tol\_out = -189.9 / 189.9  
tol\_jump\_frost = -4507.45 / 4507.45  
tol\_out\_frost = -949.5 / 949.5

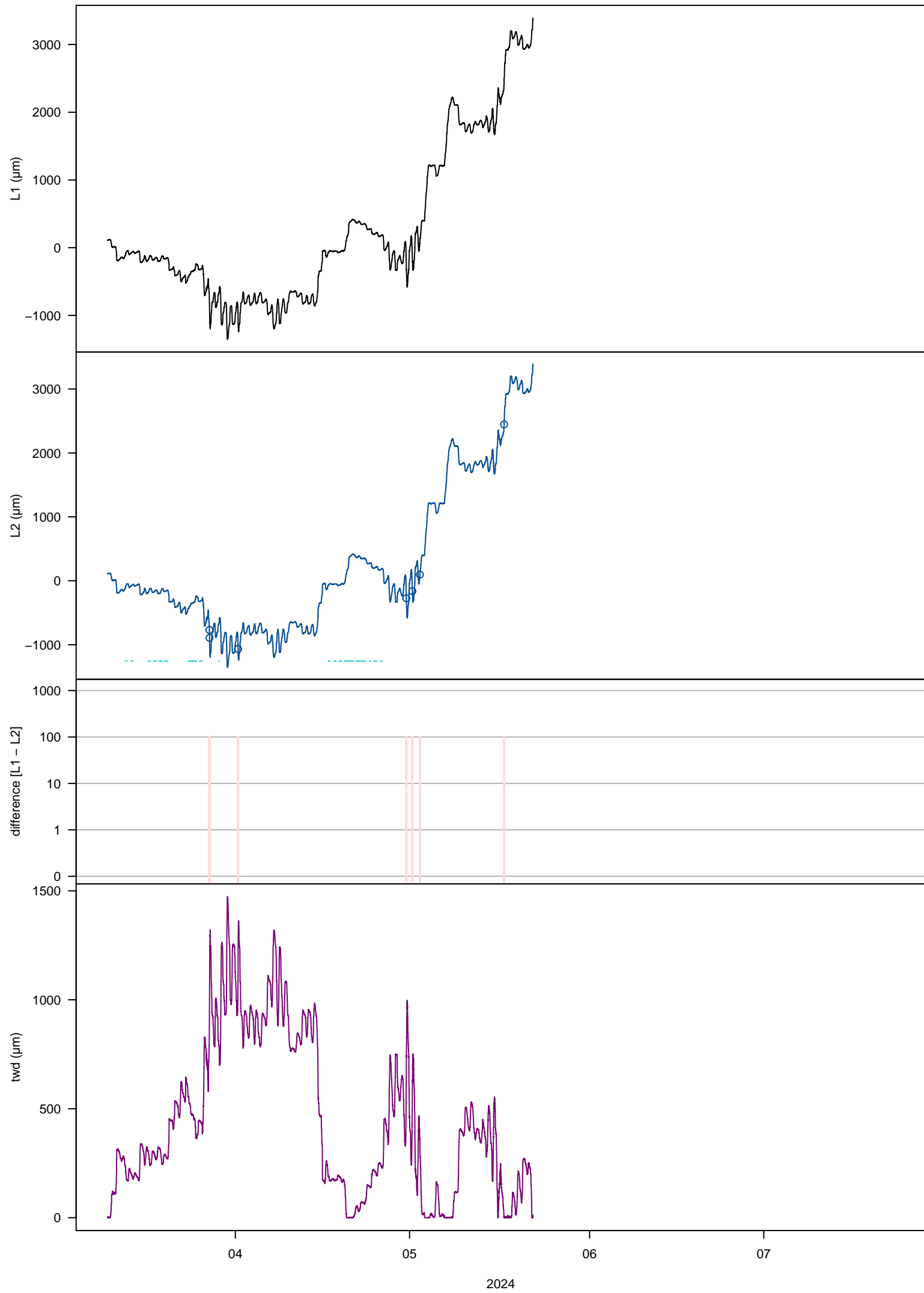
### changes in data

interpolated: 0.03%  
deleted: 0.03%  
missing: 0%

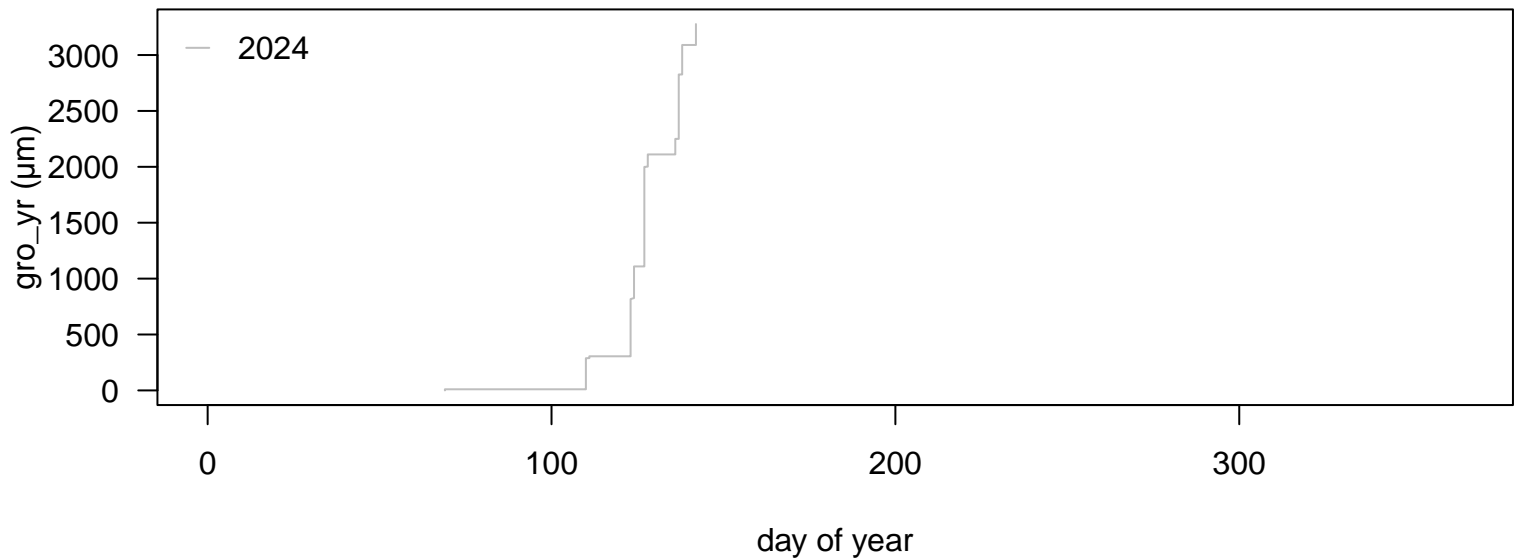
### growth statistics (µm): median (min / max)

month: 154 (10 / 421)  
week: 154 (10 / 421)  
day: 125 (10 / 325)  
hour: 11.5 (1 / 59)

# 5. Increment [mm] 2/1\_5A3



## 5. Increment [mm] 2/1\_5A3



### input variables

tol\_jump = 50  
tol\_out = 10  
frost\_thr = 5  
lowtemp = 5  
interpol = 48  
frag\_len = 2.1  
tz = UTC

### applied thresholds (µm)

tol\_jump = -1796.13 / 1802.13  
tol\_out = -373.98 / 379.98  
tol\_jump\_frost = -8980.65 / 9010.65  
tol\_out\_frost = -1869.9 / 1899.9

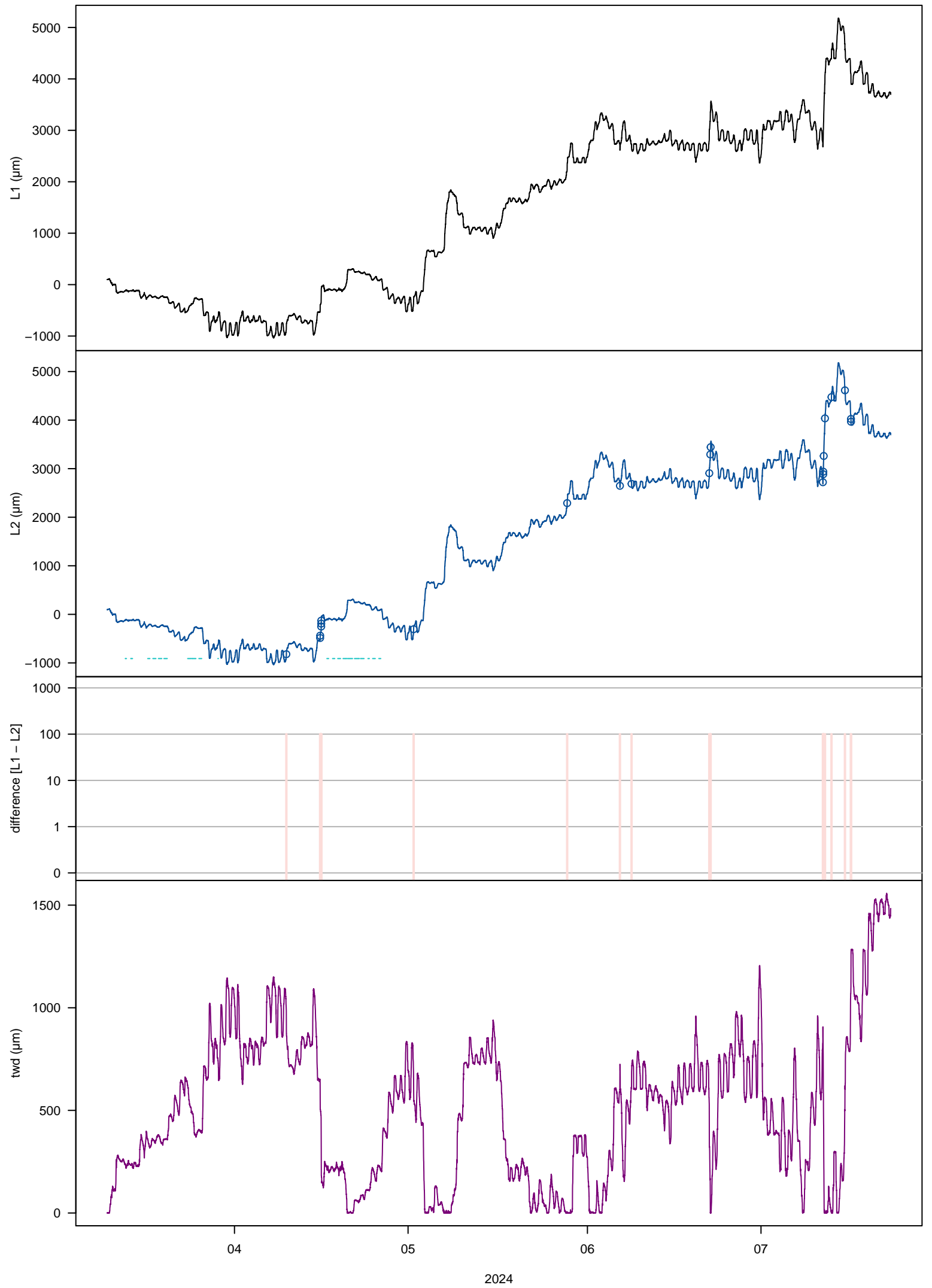
### changes in data

interpolated: 0.04%  
deleted: 0.04%  
missing: 45.9%

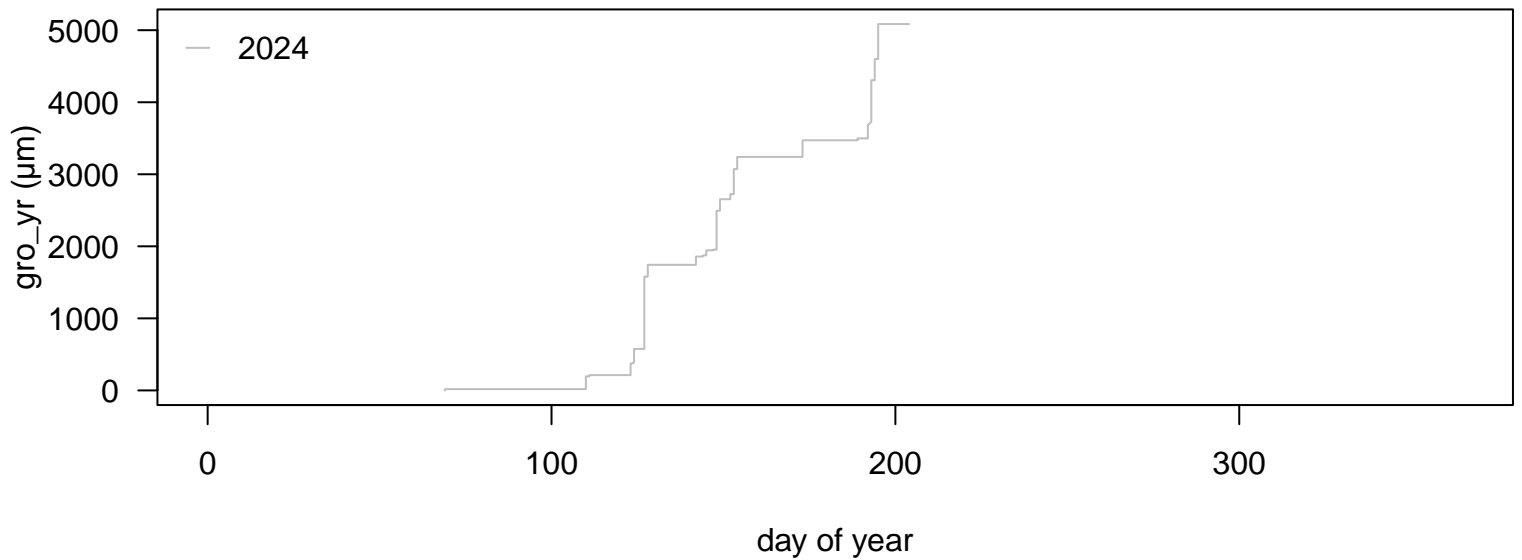
### growth statistics (µm): median (min / max)

month: 295 (10 / 2972)  
week: 549.5 (10 / 1002)  
day: 264 (10 / 890)  
hour: 18 (1 / 155)

# 7. Increment [mm] 2/3\_5C3



## 7. Increment [mm] 2/3\_5C3



### input variables

tol\_jump = 50  
tol\_out = 10  
frost\_thr = 5  
lowtemp = 5  
interpol = 48  
frag\_len = 2.1  
tz = UTC

### applied thresholds (μm)

tol\_jump = -1797.84 / 1803.84  
tol\_out = -379.8 / 379.8  
tol\_jump\_frost = -8989.2 / 9019.2  
tol\_out\_frost = -1899 / 1899

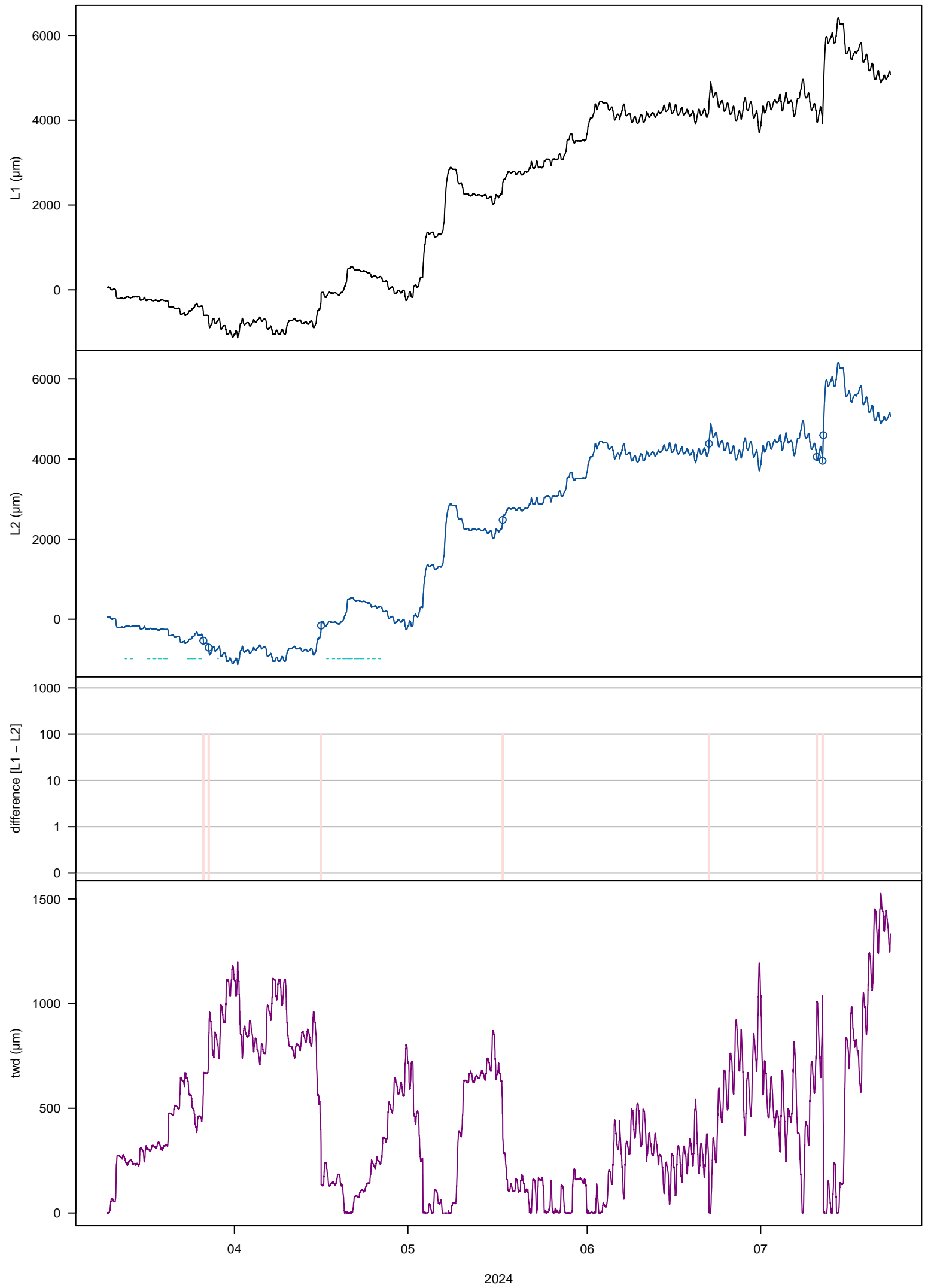
### changes in data

interpolated: 0.11%  
deleted: 0.11%  
missing: 0%

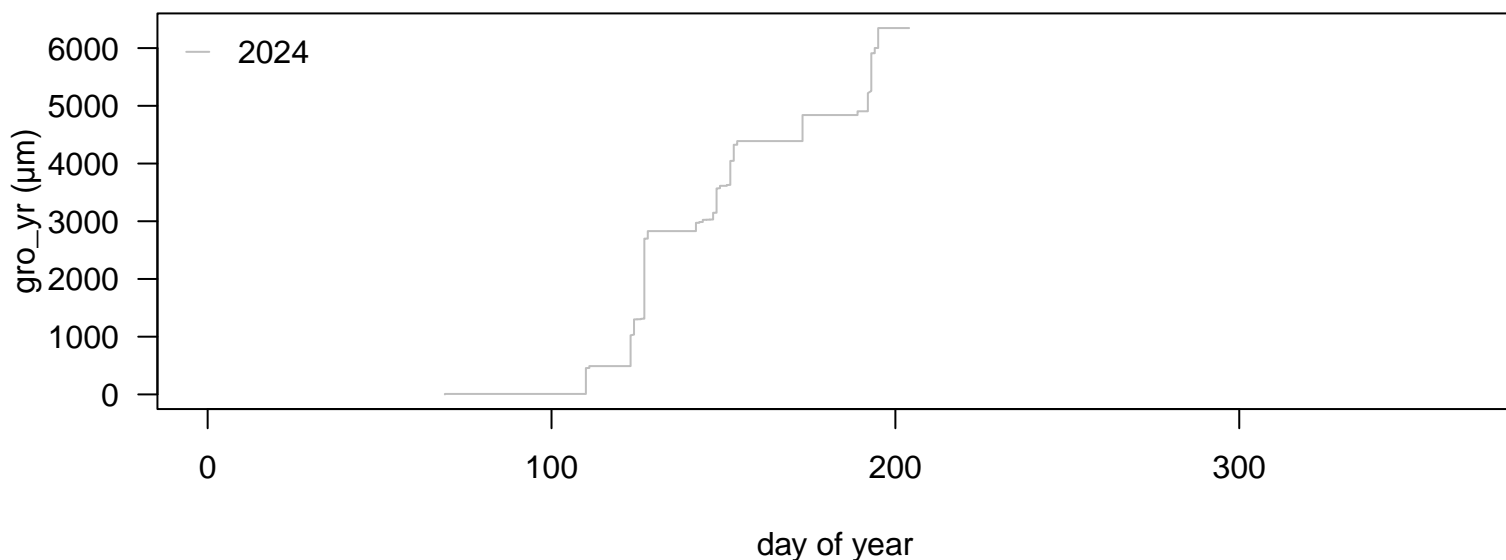
### growth statistics (μm): median (min / max)

month: 818 (18 / 2442)  
week: 231 (18 / 1613)  
day: 166.5 (8 / 1003)  
hour: 21 (1 / 184)

### 8. Increment [mm] 2/4\_5D2



## 8. Increment [mm] 2/4\_5D2



### input variables

tol\_jump = 50  
tol\_out = 10  
frost\_thr = 5  
lowtemp = 5  
interpol = 48  
frag\_len = 2.1  
tz = UTC

### applied thresholds (μm)

tol\_jump = -1796.14 / 1802.13  
tol\_out = -373.81 / 379.79  
tol\_jump\_frost = -8980.7 / 9010.65  
tol\_out\_frost = -1869.05 / 1898.95

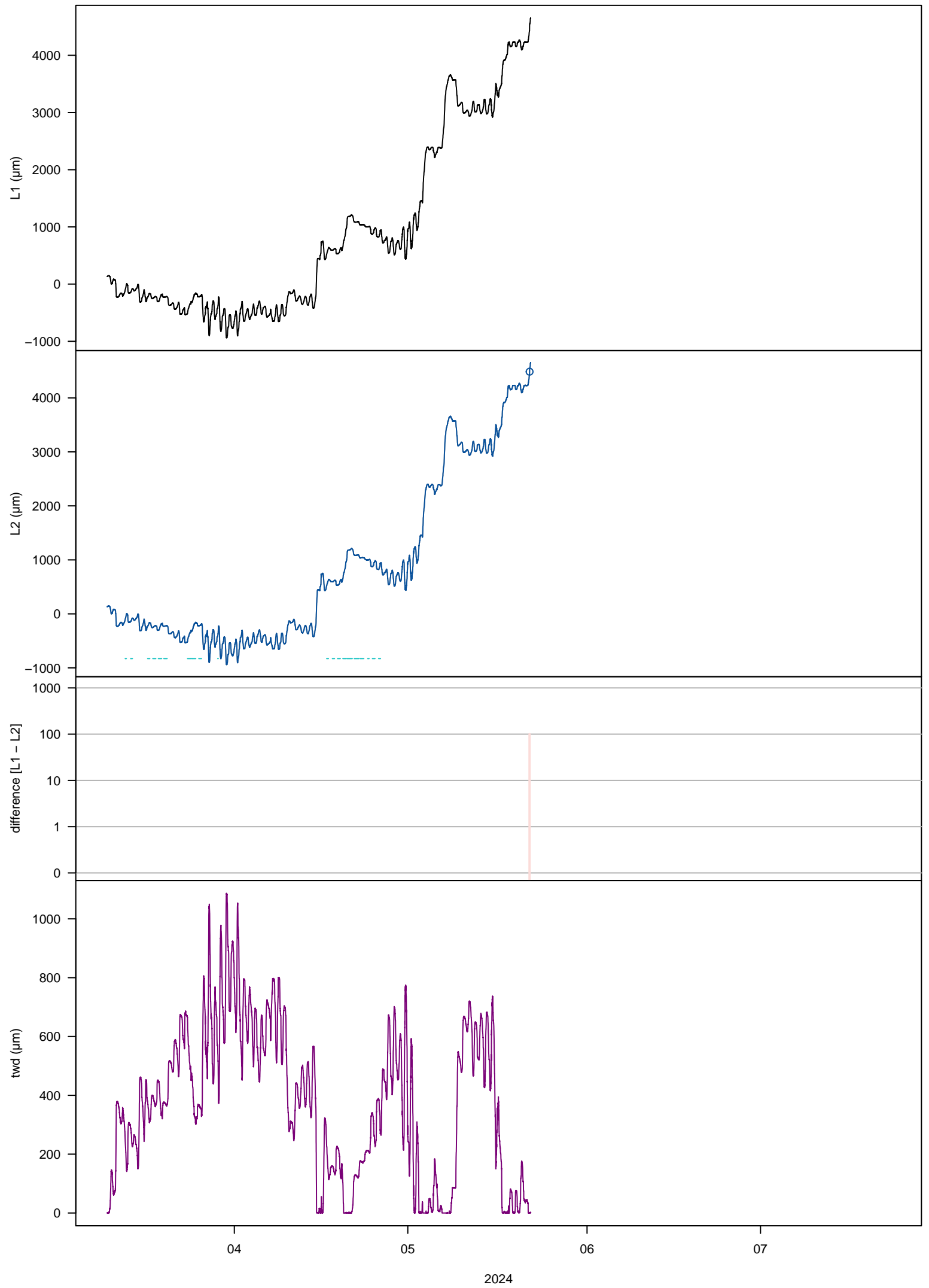
### changes in data

interpolated: 0.04%  
deleted: 0.04%  
missing: 0%

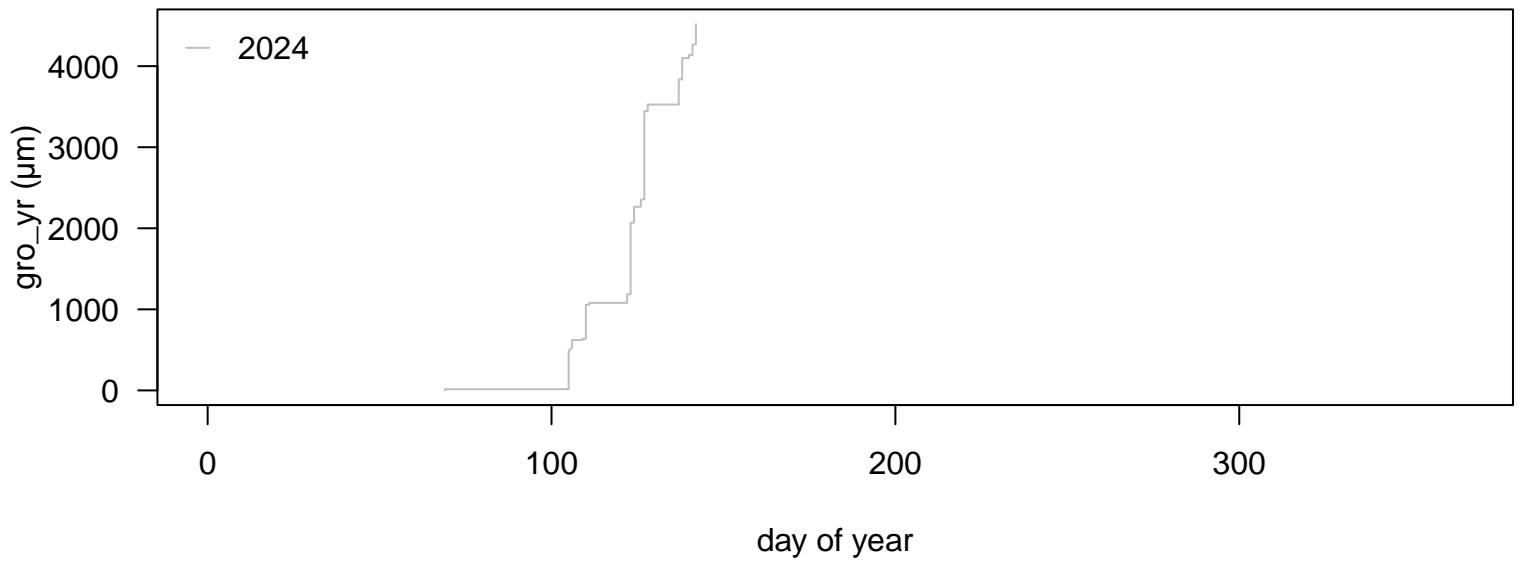
### growth statistics (μm): median (min / max)

month: 1212 (8 / 3138)  
week: 482 (8 / 1527)  
day: 117 (2 / 1390)  
hour: 20.5 (1 / 182)

9. Increment [mm]\_3/1\_5A4



## 9. Increment [mm] 3/1\_5A4



### input variables

tol\_jump = 50  
tol\_out = 10  
frost\_thr = 5  
lowtemp = 5  
interpol = 48  
frag\_len = 2.1  
tz = UTC

### applied thresholds (μm)

tol\_jump = -1797.85 / 1803.85  
tol\_out = -468.55 / 474.52  
tol\_jump\_frost = -8989.25 / 9019.25  
tol\_out\_frost = -2342.75 / 2372.6

### changes in data

interpolated: 0.01%  
deleted: 0.01%  
missing: 45.9%

### growth statistics (μm): median (min / max)

month: 1065 (15 / 3439)  
week: 819.5 (15 / 1261)  
day: 131 (1 / 1092)  
hour: 20 (1 / 146)